

NSD3 antibody

Product Information

| | |
|---------------|--|
| Catalog No.: | FNab05863 |
| Size: | 100µg |
| Form: | liquid |
| Purification: | Immunogen affinity purified |
| Purity: | ≥95% as determined by SDS-PAGE |
| Host: | Rabbit |
| Clonality: | polyclonal |
| Clone ID: | None |
| IsoType: | IgG |
| Storage: | PBS with 0.02% sodium azide and 50% glycerol pH 7.3, -20°C for 12 months(Avoid repeated freeze / thaw cycles.) |

Background

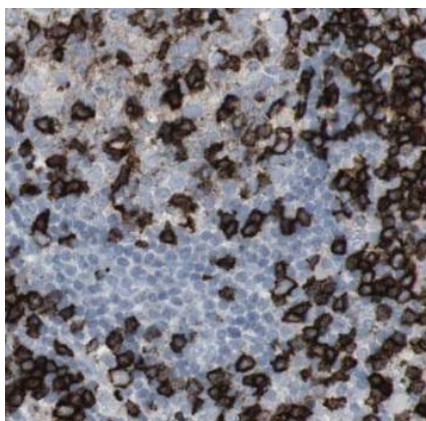
None

Immunogen information

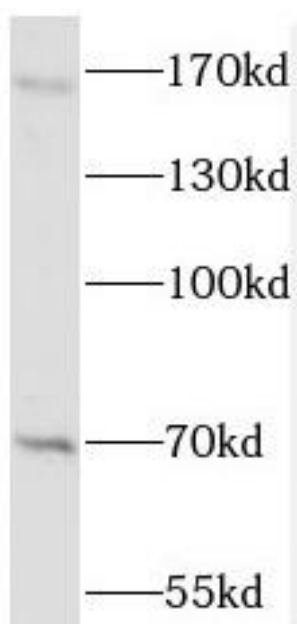
| | |
|--------------|--|
| Immunogen: | Wolf-Hirschhorn syndrome candidate 1-like 1 |
| Synonyms: | Histone-lysine N-methyltransferase NSD3 Nuclear SET domain-containing protein 3 Protein whistle WHSC1-like 1 isoform 9 with methyltransferase activity to lysine Wolf-Hirschhorn syndrome candidate 1-like protein 1 (WHSC1-like protein 1) NSD3 WHSC1L1 |
| Observed MW: | 160-170 kDa, 68-72 kDa |
| Uniprot ID : | Q9BZ95 |

Application

| | |
|-----------------------|-----------------------------------|
| Reactivity: | Human, Mouse, Rat |
| Tested Application: | ELISA, IHC, WB |
| Recommended dilution: | WB: 1:500-1:2000; IHC: 1:20-1:200 |
| Image: | |



Immunohistochemistry of paraffin-embedded human lymphoma using FNab05863(WHSC1L1 antibody) at dilution of 1:50



HeLa cells were subjected to SDS PAGE followed by western blot with FNab05863(WHSC1L1 Antibody) at dilution of 1:600