

SLC17A1 antibody

Product Information

Catalog No.:	FNab05826
Size:	100µg
Form:	liquid
Purification:	Immunogen affinity purified
Purity:	≥95% as determined by SDS-PAGE
Host:	Rabbit
Clonality:	polyclonal
Clone ID:	None
IsoType:	IgG
Storage:	PBS with 0.02% sodium azide and 50% glycerol pH 7.3, -20°C for 12 months(Avoid repeated freeze / thaw cycles.)

Background

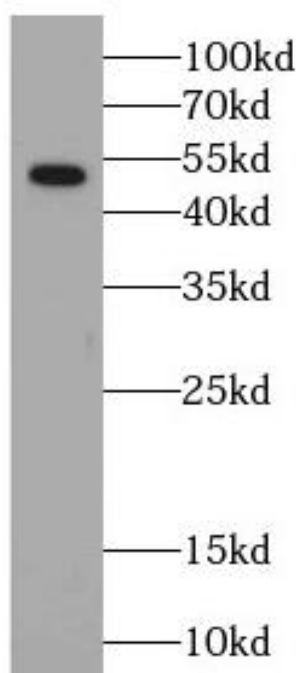
None

Immunogen information

Immunogen:	solute carrier family 17(sodium phosphate), member 1
Synonyms:	Sodium-dependent phosphate transport protein 1 Na(+)/PI cotransporter 1 Na/Pi-4 Renal Na(+)-dependent phosphate cotransporter 1 Renal sodium-dependent phosphate transport protein 1 (Renal sodium-phosphate transport protein 1) Sodium/phosphate cotransporter 1 Solute carrier family 17 member 1 SLC17A1 NPT1
Observed MW:	50 kDa
Uniprot ID :	Q14916

Application

Reactivity:	Human, Mouse, Rat
Tested Application:	ELISA, WB
Recommended dilution: WB:	1:500-1:2400
Image:	



human placenta tissue were subjected to SDS
PAGE followed by western blot with
FNab05826(NPT1 antibody) at dilution of 1:300