

NPC1 antibody

Product Information

Catalog No.:	FNab05812
Size:	100µg
Form:	liquid
Purification:	Immunogen affinity purified
Purity:	≥95% as determined by SDS-PAGE
Host:	Rabbit
Clonality:	polyclonal
Clone ID:	None
IsoType:	IgG
Storage:	PBS with 0.02% sodium azide and 50% glycerol pH 7.3, -20°C for 12 months(Avoid repeated freeze / thaw cycles.)

Background

Intracellular cholesterol transporter which acts in concert with NPC2 and plays an important role in the egress of cholesterol from the endosomal/lysosomal compartment. Both NPC1 and NPC2 function as the cellular 'tag team duo'(TTD) to catalyze the mobilization of cholesterol within the multivesicular environment of the late endosome(LE) to effect egress through the limiting bilayer of the LE. NPC2 binds unesterified cholesterol that has been released from LDLs in the lumen of the late endosomes/lysosomes and transfers it to the cholesterol-binding pocket of the N-terminal domain of NPC1. Cholesterol binds to NPC1 with the hydroxyl group buried in the binding pocket and is exported from the limiting membrane of late endosomes/ lysosomes to the ER and plasma membrane by an unknown mechanism. Binds oxysterol with higher affinity than cholesterol. May play a role in vesicular trafficking in glia, a process that may be crucial for maintaining the structural and functional integrity of nerve terminals. (Microbial infection) Acts as an endosomal entry receptor for ebolavirus.

Immunogen information

Immunogen:	Niemann-Pick disease, type C1
Synonyms:	NPC intracellular cholesterol transporter 1 Niemann-Pick C1 protein NPC1
Observed MW:	160 kDa
Uniprot ID :	O15118

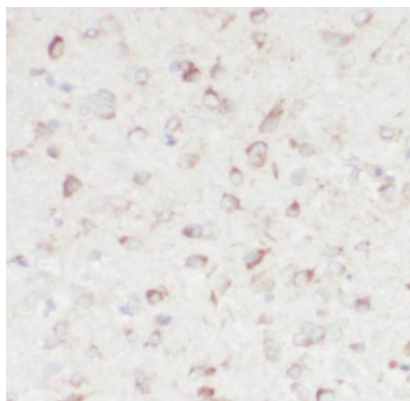
Application

Reactivity: Human, Mouse

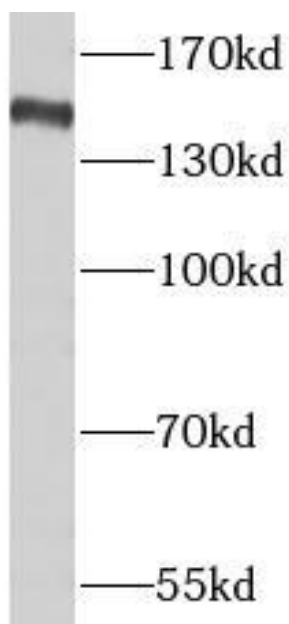
Tested Application: ELISA, WB, IHC

Recommended dilution: WB: 1:500-1:2000; IHC: 1:20-1:200

Image:



Immunohistochemistry of paraffin-embedded human brain tissue slide using FNab05812(NPC1 Antibody) at dilution of 1:50



HEK-293 cells were subjected to SDS PAGE followed by western blot with FNab05812(NPC1 antibody) at dilution of 1:1000