

NEFL antibody

Product Information

Catalog No.:	FNab05710
Size:	100µg
Form:	liquid
Purification:	Immunogen affinity purified
Purity:	≥95% as determined by SDS-PAGE
Host:	Rabbit
Clonality:	polyclonal
Clone ID:	None
IsoType:	IgG
Storage:	PBS with 0.02% sodium azide and 50% glycerol pH 7.3, -20°C for 12 months (Avoid repeated freeze / thaw cycles.)

Background

Neurofilaments are type IV intermediate filament heteropolymers composed of light, medium, and heavy chains. Neurofilaments comprise the axoskeleton and they functionally maintain the neuronal caliber. They may also play a role in intracellular transport to axons and dendrites. This gene encodes the light chain neurofilament protein. Mutations in this gene cause Charcot-Marie-Tooth disease types 1F (CMT1F) and 2E (CMT2E), disorders of the peripheral nervous system that are characterized by distinct neuropathies. A pseudogene has been identified on chromosome Y.

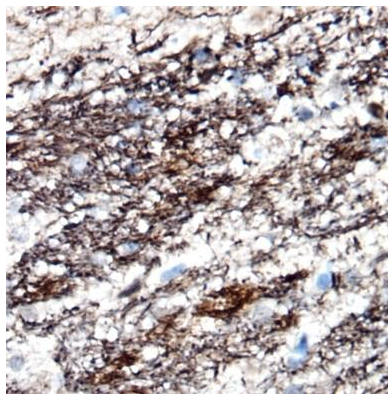
Immunogen information

Immunogen:	neurofilament, light polypeptide
Synonyms:	Neurofilament light polypeptide (NF-L) 68 kDa neurofilament protein Neurofilament triplet L protein NEFL NF68 NFL
Observed MW:	68 kDa
Uniprot ID :	P07196

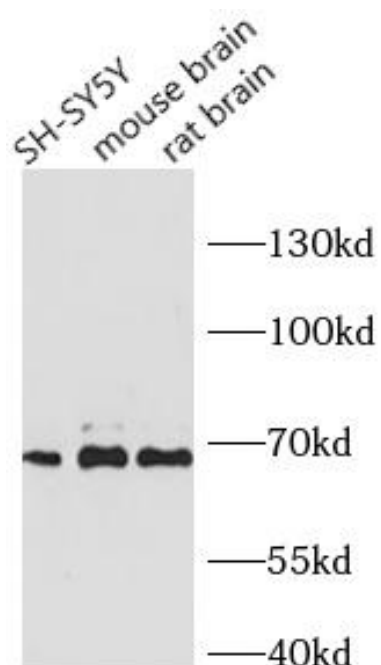
Application

Reactivity:	Human, Mouse, Rat
Tested Application:	ELISA, WB, IHC, IF
Recommended dilution:	WB: 1:500 - 1:2000; IHC: 1:100 - 1:500; IF: 1:50 - 1:200

Image:



Immunohistochemistry of paraffin-embedded rat brain tissue slide using FNab05710(NEFL Antibody) at dilution of 1:200



Various lysates were subjected to SDS PAGE followed by western blot with FNab05710(NEFL antibody) at dilution of 1:1000