

NET1 antibody

Product Information

| | |
|---------------|--|
| Catalog No.: | FNab05665 |
| Size: | 100µg |
| Form: | liquid |
| Purification: | Immunogen affinity purified |
| Purity: | ≥95% as determined by SDS-PAGE |
| Host: | Rabbit |
| Clonality: | polyclonal |
| Clone ID: | None |
| IsoType: | IgG |
| Storage: | PBS with 0.02% sodium azide and 50% glycerol pH 7.3, -20°C for 12 months(Avoid repeated freeze / thaw cycles.) |

Background

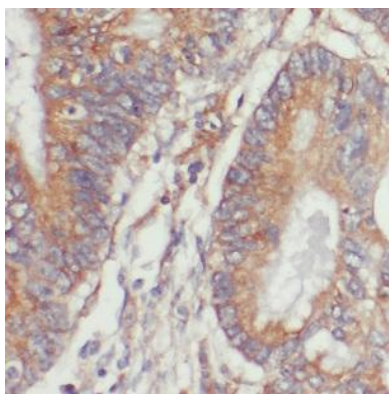
Acts as guanine nucleotide exchange factor(GEF) for RhoA GTPase. May be involved in activation of the SAPK/JNK pathway Stimulates genotoxic stress-induced RHOB activity in breast cancer cells leading to their cell death.

Immunogen information

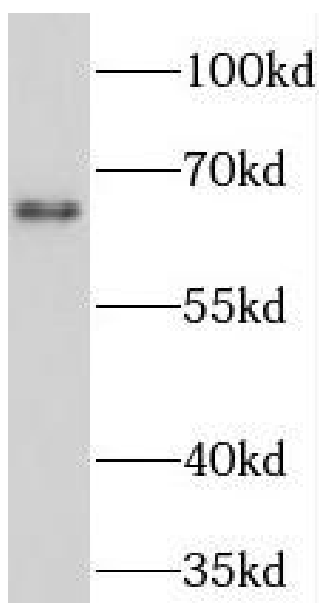
| | |
|--------------|--|
| Immunogen: | neuroepithelial cell transforming 1 |
| Synonyms: | Neuroepithelial cell-transforming gene 1 protein Proto-oncogene p65 Net1 Rho guanine nucleotide exchange factor 8 NET1 ARHGEF8 |
| Observed MW: | 62-68 kDa |
| Uniprot ID : | Q7Z628 |

Application

| | |
|-----------------------|---|
| Reactivity: | Human, Mouse |
| Tested Application: | ELISA, WB, IF, IHC |
| Recommended dilution: | WB: 1:500-1:2000; IHC: 1:20-1:200; IF: 1:20-1:200 |
| Image: | |



Immunohistochemistry of paraffin-embedded human rectal cancer using FNa05665 (NET1 Antibody) at dilution of 1:50



mouse brain tissue were subjected to SDS PAGE followed by western blot with FNa05665 (NET1 antibody) at dilution of 1:1000