

## NELFE antibody

### Product Information

Catalog No.:	FNab05658
Size:	100µg
Form:	liquid
Purification:	Immunogen affinity purified
Purity:	≥95% as determined by SDS-PAGE
Host:	Rabbit
Clonality:	polyclonal
Clone ID:	None
IsoType:	IgG
Storage:	PBS with 0.02% sodium azide and 50% glycerol pH 7.3, -20°C for 12 months (Avoid repeated freeze / thaw cycles.)

### Background

The protein encoded by this gene is part of a complex termed negative elongation factor (NELF) which represses RNA polymerase II transcript elongation. This protein bears similarity to nuclear RNA-binding proteins; however, it has not been demonstrated that this protein binds RNA. The protein contains a tract of alternating basic and acidic residues, largely arginine (R) and aspartic acid (D). The gene localizes to the major histocompatibility complex (MHC) class III region on chromosome 6.

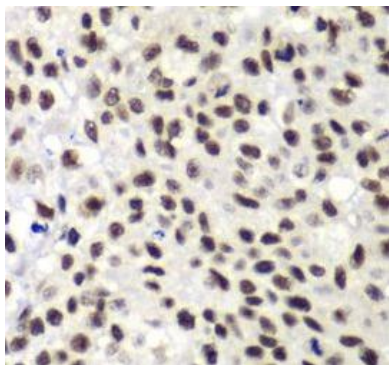
### Immunogen information

Immunogen:	RD RNA binding protein
Synonyms:	Negative elongation factor E (NELF-E) RNA-binding protein RD NELFE RD RDBP
Observed MW:	43 kDa
Uniprot ID :	P18615

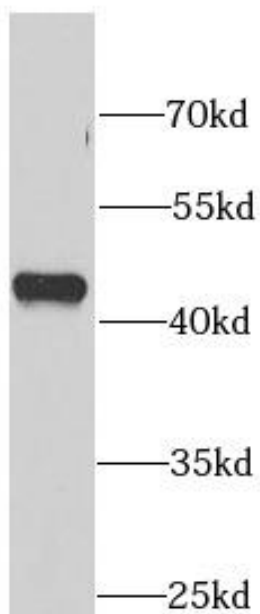
### Application

Reactivity:	Human, Mouse
Tested Application:	ELISA, WB, IHC, IF
Recommended dilution:	WB: 1:500 - 1:2000; IHC: 1:50 - 1:200; IF: 1:50 - 1:200

Image:



Immunohistochemistry of paraffin-embedded human lung cancer using FNab05658(RDBP antibody) at dilution of 1:100



HEK-293 cells were subjected to SDS PAGE followed by western blot with FNab05658(RDBP antibody) at dilution of 1:1000