

NDE1 antibody

Product Information

Catalog No.:	FNab05600
Size:	100µg
Form:	liquid
Purification:	Immunogen affinity purified
Purity:	≥95% as determined by SDS-PAGE
Host:	Rabbit
Clonality:	polyclonal
Clone ID:	None
IsoType:	IgG
Storage:	PBS with 0.02% sodium azide and 50% glycerol pH 7.3, -20°C for 12 months (Avoid repeated freeze / thaw cycles.)

Background

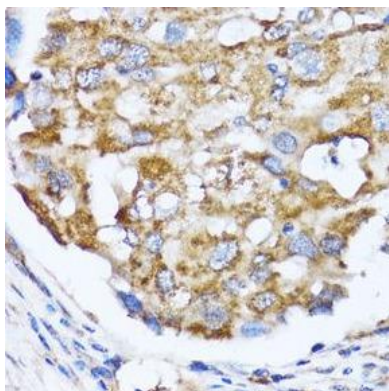
This gene encodes a member of the nuclear distribution E (NudE) family of proteins. The encoded protein is localized at the centrosome and interacts with other centrosome components as part of a multiprotein complex that regulates dynein function. This protein plays an essential role in microtubule organization, mitosis and neuronal migration. Mutations in this gene cause lissencephaly 4, a disorder characterized by lissencephaly, severe brain atrophy, microcephaly, and severe mental retardation. Alternative splicing results in multiple transcript variants.

Immunogen information

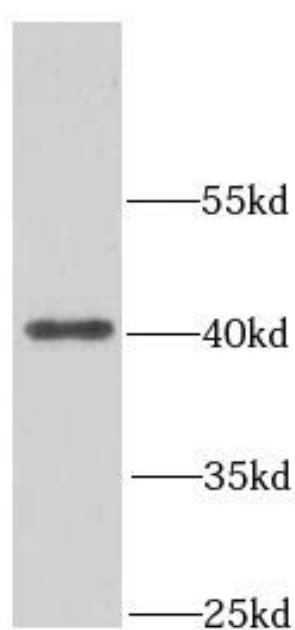
Immunogen:	nudE nuclear distribution gene E homolog 1 (A. nidulans)
Synonyms:	Nuclear distribution protein nudE homolog 1 (NudE) NDE1 NUDE
Observed MW:	39 kDa
Uniprot ID :	Q9NXR1

Application

Reactivity:	Human, Mouse, Rat
Tested Application:	ELISA, WB, IHC
Recommended dilution:	WB: 1:500 - 1:2000; IHC: 1:50 - 1:200
Image:	



Immunohistochemistry of paraffin-embedded human breast cancer using FNab05600(NDE1 antibody) at dilution of 1:100



A2780 cells were subjected to SDS PAGE followed by western blot with FNab05600(NDE1 antibody) at dilution of 1:1500