

MYLK antibody

Product Information

Catalog No.:	FNab05493
Size:	100µg
Form:	liquid
Purification:	Immunogen affinity purified
Purity:	≥95% as determined by SDS-PAGE
Host:	Rabbit
Clonality:	polyclonal
Clone ID:	None
IsoType:	IgG
Storage:	PBS with 0.02% sodium azide and 50% glycerol pH 7.3, -20°C for 12 months (Avoid repeated freeze / thaw cycles.)

Background

This gene, a muscle member of the immunoglobulin gene superfamily, encodes myosin light chain kinase which is a calcium/calmodulin dependent enzyme. This kinase phosphorylates myosin regulatory light chains to facilitate myosin interaction with actin filaments to produce contractile activity. This gene encodes both smooth muscle and nonmuscle isoforms. In addition, using a separate promoter in an intron in the 3' region, it encodes telokin, a small protein identical in sequence to the C-terminus of myosin light chain kinase, that is independently expressed in smooth muscle and functions to stabilize unphosphorylated myosin filaments. A pseudogene is located on the p arm of chromosome 3. Four transcript variants that produce four isoforms of the calcium/calmodulin dependent enzyme have been identified as well as two transcripts that produce two isoforms of telokin. Additional variants have been identified but lack full length transcripts.

Immunogen information

Immunogen:	myosin light chain kinase
Synonyms:	Myosin light chain kinase, smooth muscle (MLCK, smMLCK) Kinase-related protein (KRP) Telokin Myosin light chain kinase, smooth muscle, deglutamylated form MYLK MLCK MLCK1 MYLK1
Observed MW:	140 kDa
Uniprot ID :	Q15746

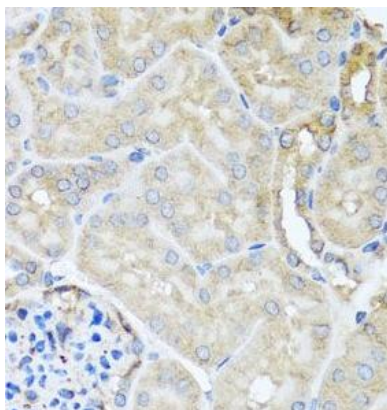
Application

Reactivity: Human, Mouse, Rat

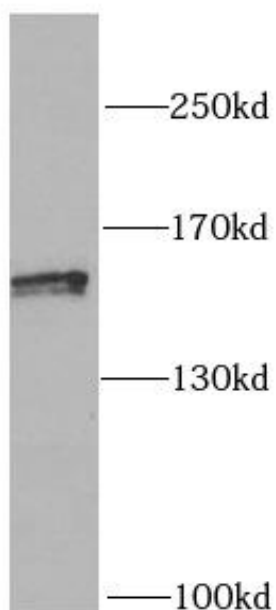
Tested Application: ELISA, WB, IHC

Recommended dilution: WB: 1:500 - 1:2000; IHC: 1:50 - 1:100

Image:



Immunohistochemistry of paraffin-embedded mouse kidney using FNab05493(MYLK antibody) at dilution of 1:100



HeLa cells were subjected to SDS PAGE followed by western blot with FNab05493(MYLK antibody) at dilution of 1:1000