

## MYL3 antibody

### Product Information

Catalog No.:	FNab05487
Size:	100µg
Form:	liquid
Purification:	Immunogen affinity purified
Purity:	≥95% as determined by SDS-PAGE
Host:	Rabbit
Clonality:	polyclonal
Clone ID:	None
IsoType:	IgG
Storage:	PBS with 0.02% sodium azide and 50% glycerol pH 7.3, -20°C for 12 months(Avoid repeated freeze / thaw cycles.)

### Background

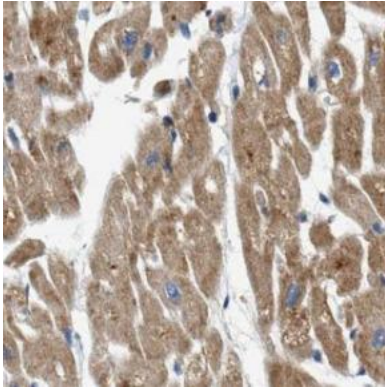
Regulatory light chain of myosin. Does not bind calcium.

### Immunogen information

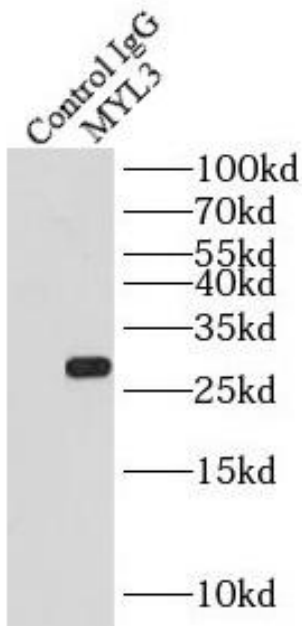
Immunogen:	myosin, light chain 3, alkali; ventricular, skeletal, slow
Synonyms:	Myosin light chain 3 Cardiac myosin light chain 1 (CMLC1) Myosin light chain 1, slow-twitch muscle B/ventricular isoform (MLC1SB) Ventricular myosin alkali light chain Ventricular myosin light chain 1 (VLC1) Ventricular/slow twitch myosin alkali light chain (MLC-1V/sb) MYL3
Observed MW:	22-27 kDa
Uniprot ID :	P08590

### Application

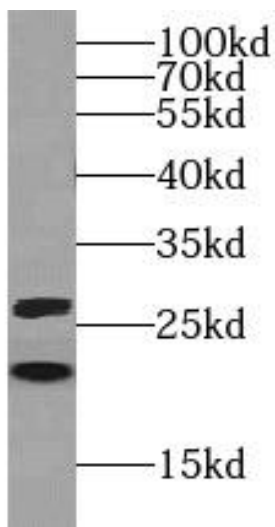
Reactivity:	Human, Mouse, Rat
Tested Application:	ELISA, IHC, WB, IP
Recommended dilution:	WB: 1:500-1:2000; IHC: 1:50-1:500; IP: 1:2000-1:4000
Image:	



Immunohistochemistry of paraffin-embedded human heart tissue slide using FNab05487(MYL3 Antibody) at dilution of 1:50



IP Result of anti-MYL3 (IP:FNab05487, 3ug; Detection:FNab05487 1:7000) with mouse heart tissue lysate 4000ug.



mouse skeletal muscle were subjected to SDS PAGE followed by western blot with FNab05487(MYL3 antibody) at dilution of 1:1000