

MYL1 antibody

Product Information

Catalog No.:	FNab05483
Size:	100µg
Form:	liquid
Purification:	Immunogen affinity purified
Purity:	≥95% as determined by SDS-PAGE
Host:	Rabbit
Clonality:	polyclonal
Clone ID:	None
IsoType:	IgG
Storage:	PBS with 0.02% sodium azide and 50% glycerol pH 7.3, -20°C for 12 months (Avoid repeated freeze / thaw cycles.)

Background

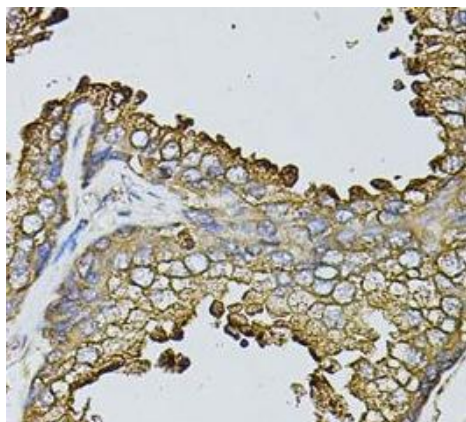
Myosin is a hexameric ATPase cellular motor protein. It is composed of two heavy chains, two nonphosphorylatable alkali light chains, and two phosphorylatable regulatory light chains. This gene encodes a myosin alkali light chain expressed in fast skeletal muscle. Two transcript variants have been identified for this gene.

Immunogen information

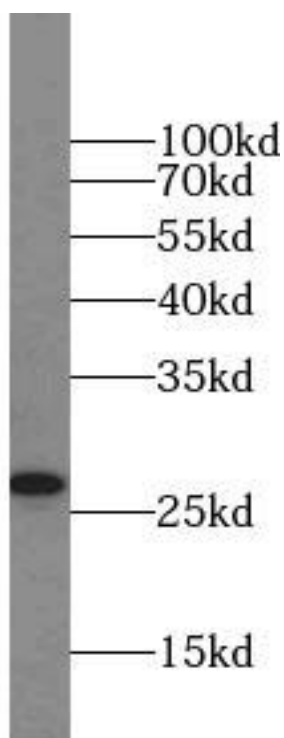
Immunogen:	myosin, light chain 1, alkali; skeletal, fast
Synonyms:	Myosin light chain 1/3, skeletal muscle isoform (MLC1/MLC3, MLC1F/MLC3F) Myosin light chain alkali 1/2 (Myosin light chain A1/A2) MYL1
Observed MW:	27 kDa
Uniprot ID :	P05976

Application

Reactivity:	Human, Mouse, Rat
Tested Application:	ELISA, WB, IHC
Recommended dilution:	WB: 1:500 - 1:2000; IHC: 1:50 - 1:200
Image:	



Immunohistochemistry of paraffin-embedded human human prostate using FNa05483(MYL1 antibody) at dilution of 1:100



mouse heart tissue were subjected to SDS PAGE followed by western blot with FNa05483(MYL1 antibody) at dilution of 1:1000