

MTRF1 antibody

Product Information

Catalog No.:	FNab05421
Size:	100µg
Form:	liquid
Purification:	Immunogen affinity purified
Purity:	≥95% as determined by SDS-PAGE
Host:	Rabbit
Clonality:	polyclonal
Clone ID:	None
IsoType:	IgG
Storage:	PBS with 0.02% sodium azide and 50% glycerol pH 7.3, -20°C for 12 months(Avoid repeated freeze / thaw cycles.)

Background

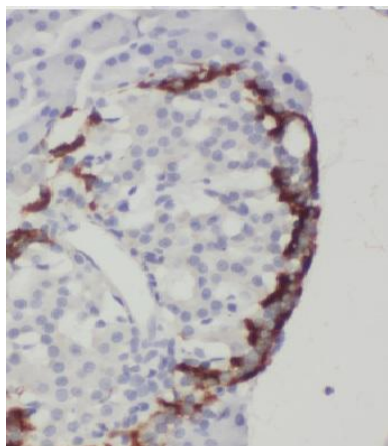
Mitochondrial peptide chain release factor that directs the termination of translation in response to the peptide chain non-cognate termination stop codons AGG and AGA.

Immunogen information

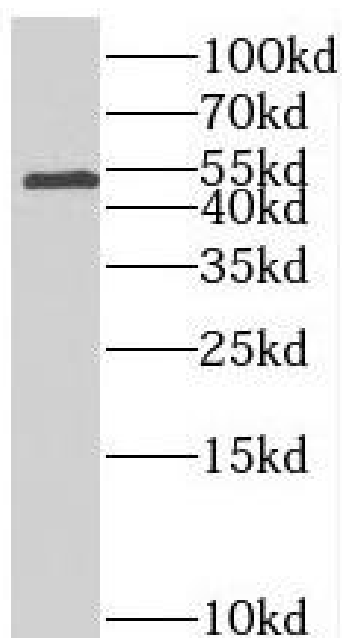
Immunogen:	mitochondrial translational release factor 1
Synonyms:	Peptide chain release factor 1, mitochondrial (MRF-1, MtRF-1) MTRF1
Observed MW:	52 kDa
Uniprot ID :	O75570

Application

Reactivity:	Human, Mouse
Tested Application:	ELISA, WB, IHC
Recommended dilution:	WB: 1:500-1:2000; IHC: 1:20-1:200
Image:	



Immunohistochemistry of paraffin-embedded human pancreas cancer using FNab05421(MTRF1 antibody) at dilution of 1:50



mouse liver tissue were subjected to SDS PAGE followed by western blot with FNab05421(MTRF1 antibody) at dilution of 1:300