

## MTCH2 antibody

### Product Information

|               |  |
|---------------|--|
| Catalog No.:  | FNab05392  |
| Size:         | 100µg  |
| Form:         | liquid   |
| Purification: | Immunogen affinity purified  |
| Purity:       | ≥95% as determined by SDS-PAGE   |
| Host:         | Rabbit   |
| Clonality:    | polyclonal   |
| Clone ID:     | None   |
| IsoType:      | IgG  |
| Storage:      | PBS with 0.02% sodium azide and 50% glycerol pH 7.3, -20°C for 12 months(Avoid repeated freeze / thaw cycles.) |

### Background

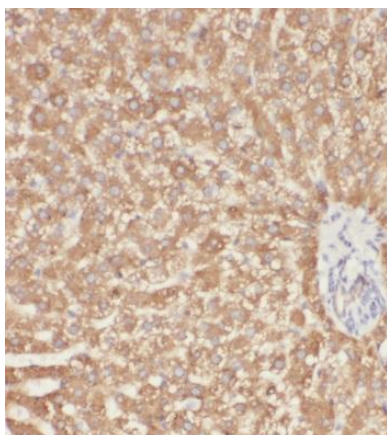
The substrate transported is not yet known. Induces mitochondrial depolarization.

### Immunogen information

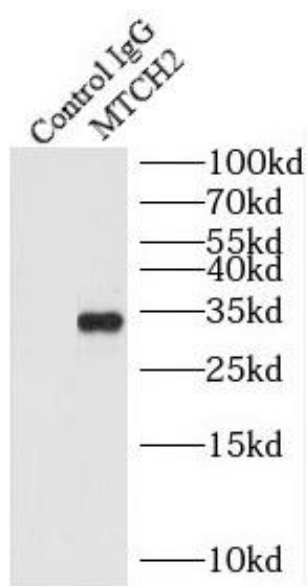
|              |  |
|--------------|--|
| Immunogen:   | mitochondrial carrier homolog 2(C. elegans)                                  |
| Synonyms:    | Mitochondrial carrier homolog 2 Met-induced mitochondrial protein MTCH2 MIMP |
| Observed MW: | 33 kDa   |
| Uniprot ID : | Q9Y6C9   |

### Application

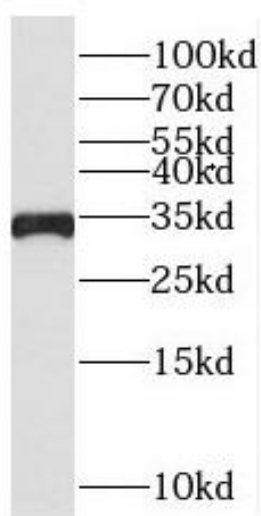
|                       |   |
|-----------------------|---|
| Reactivity:           | Human, Mouse  |
| Tested Application:   | ELISA, WB, IHC, IP, IF  |
| Recommended dilution: | WB: 1:500-1:2000; IP: 1:200-1:2000; IHC: 1:20-1:200; IF: 1:20-1:200 |
| Image:                |   |



Immunohistochemistry of paraffin-embedded human liver using FNab05392(MTCH2 antibody) at dilution of 1:100



IP Result of anti-MTCH2 (IP:FNab05392, 3ug; Detection:FNab05392 1:1000) with HepG2 cells lysate 4000ug.



HeLa cells were subjected to SDS PAGE followed by western blot with FNab05392(MTCH2 antibody) at dilution of 1:1000