

MS4A6A antibody

Product Information

| | |
|---------------|--|
| Catalog No.: | FNab05369 |
| Size: | 100µg |
| Form: | liquid |
| Purification: | Immunogen affinity purified |
| Purity: | ≥95% as determined by SDS-PAGE |
| Host: | Rabbit |
| Clonality: | polyclonal |
| Clone ID: | None |
| IsoType: | IgG |
| Storage: | PBS with 0.02% sodium azide and 50% glycerol pH 7.3, -20°C for 12 months(Avoid repeated freeze / thaw cycles.) |

Background

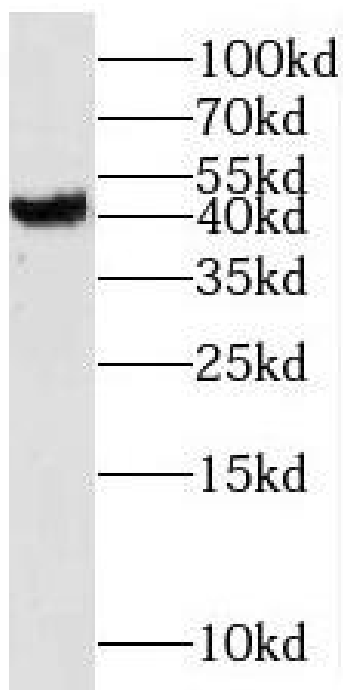
May be involved in signal transduction as a component of a multimeric receptor complex.

Immunogen information

| | |
|--------------|--|
| Immunogen: | membrane-spanning 4-domains, subfamily A, member 6A |
| Synonyms: | Membrane-spanning 4-domains subfamily A member 6A CD20 antigen-like 3 Four-span transmembrane protein 3 MS4A6A 4SPAN3 CD20L3 MS4A6 |
| Observed MW: | 40-45 kDa |
| Uniprot ID : | Q9H2W1 |

Application

| | |
|---------------------------|--------------|
| Reactivity: | Human |
| Tested Application: | ELISA, WB |
| Recommended dilution: WB: | 1:500-1:2000 |
| Image: | |



K-562 cells were subjected to SDS PAGE followed by western blot with FNab05369(MS4A6A antibody) at dilution of 1:400