

## MRPL37 antibody

### Product Information

|               |  |
|---------------|--|
| Catalog No.:  | FNab05330  |
| Size:         | 100µg  |
| Form:         | liquid   |
| Purification: | Immunogen affinity purified  |
| Purity:       | ≥95% as determined by SDS-PAGE   |
| Host:         | Rabbit   |
| Clonality:    | polyclonal   |
| Clone ID:     | None   |
| IsoType:      | IgG  |
| Storage:      | PBS with 0.02% sodium azide and 50% glycerol pH 7.3, -20°C for 12 months(Avoid repeated freeze / thaw cycles.) |

### Background

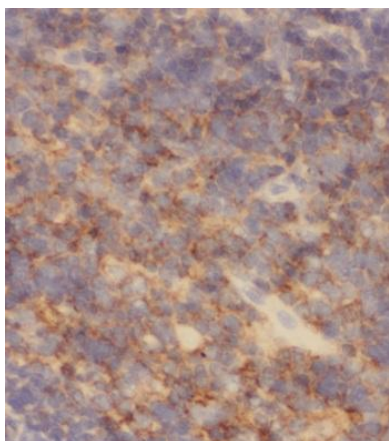
None

### Immunogen information

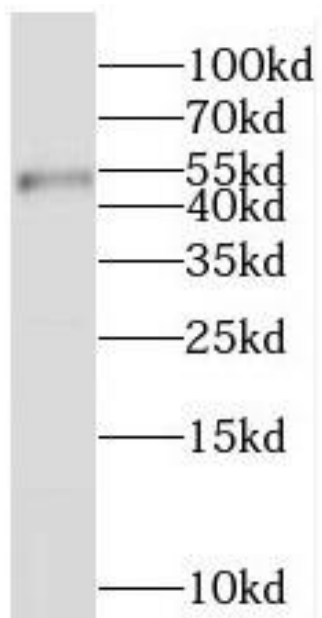
|              |  |
|--------------|--|
| Immunogen:   | mitochondrial ribosomal protein L37  |
| Synonyms:    | Large ribosomal subunit protein mL37 39S ribosomal protein L2, mitochondrial (L2mt, MRP-L2) 39S ribosomal protein L37, mitochondrial (L37mt, MRP-L37) MRPL37 MRPL2 RPML2 |
| Observed MW: | 48 kDa   |
| Uniprot ID : | Q9BZE1   |

### Application

|                       |                                   |
|-----------------------|-----------------------------------|
| Reactivity:           | Human, Mouse, Rat                 |
| Tested Application:   | ELISA, WB, IHC                    |
| Recommended dilution: | WB: 1:500-1:2000; IHC: 1:20-1:200 |
| Image:                |                                   |



Immunohistochemistry of paraffin-embedded human lymphoma using FNab05330(MRPL37 antibody) at dilution of 1:50



mouse liver tissue were subjected to SDS PAGE followed by western blot with FNab05330(MRPL37 antibody) at dilution of 1:1000