

## MRPL15 antibody

### Product Information

|               |                                                                                                                |
|---------------|----------------------------------------------------------------------------------------------------------------|
| Catalog No.:  | FNab05318                                                                                                      |
| Size:         | 100µg                                                                                                          |
| Form:         | liquid                                                                                                         |
| Purification: | Immunogen affinity purified                                                                                    |
| Purity:       | ≥95% as determined by SDS-PAGE                                                                                 |
| Host:         | Rabbit                                                                                                         |
| Clonality:    | polyclonal                                                                                                     |
| Clone ID:     | None                                                                                                           |
| IsoType:      | IgG                                                                                                            |
| Storage:      | PBS with 0.02% sodium azide and 50% glycerol pH 7.3, -20°C for 12 months(Avoid repeated freeze / thaw cycles.) |

### Background

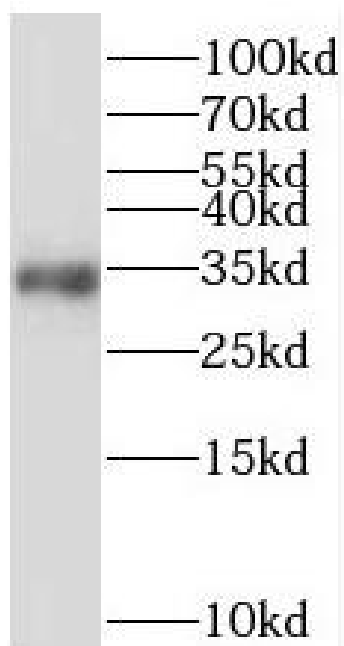
None

### Immunogen information

|              |                                                                                                        |
|--------------|--------------------------------------------------------------------------------------------------------|
| Immunogen:   | mitochondrial ribosomal protein L15                                                                    |
| Synonyms:    | Large ribosomal subunit protein uL15m 39S ribosomal protein L15, mitochondrial (L15mt, MRP-L15) MRPL15 |
| Observed MW: | 33-35 kDa                                                                                              |
| Uniprot ID : | Q9P015                                                                                                 |

### Application

|                       |                   |
|-----------------------|-------------------|
| Reactivity:           | Human, Mouse, Rat |
| Tested Application:   | ELISA, WB         |
| Recommended dilution: | WB: 1:500-1:2000  |
| Image:                |                   |



MCF7 cells were subjected to SDS PAGE followed by western blot with FNab05318(MRPL15 antibody) at dilution of 1:1000