

MRPL1 antibody

Product Information

Catalog No.:	FNab05312
Size:	100µg
Form:	liquid
Purification:	Immunogen affinity purified
Purity:	≥95% as determined by SDS-PAGE
Host:	Rabbit
Clonality:	polyclonal
Clone ID:	None
IsoType:	IgG
Storage:	PBS with 0.02% sodium azide and 50% glycerol pH 7.3, -20°C for 12 months (Avoid repeated freeze / thaw cycles.)

Background

Mammalian mitochondrial ribosomal proteins are encoded by nuclear genes and help in protein synthesis within the mitochondrion. Mitochondrial ribosomes (mitoribosomes) consist of a small 28S subunit and a large 39S subunit. They have an estimated 75% protein to rRNA composition compared to prokaryotic ribosomes, where this ratio is reversed. Another difference between mammalian mitoribosomes and prokaryotic ribosomes is that the latter contain a 5S rRNA. Among different species, the proteins comprising the mitoribosome differ greatly in sequence, and sometimes in biochemical properties, which prevents easy recognition by sequence homology. This gene encodes a 39S subunit protein that belongs to the L1 ribosomal protein family.

Immunogen information

Immunogen:	mitochondrial ribosomal protein L1
Synonyms:	Large ribosomal subunit protein uL1m 39S ribosomal protein L1, mitochondrial (L1mt, MRP-L1) MRPL1
Observed MW:	37 kDa
Uniprot ID :	Q9BYD6

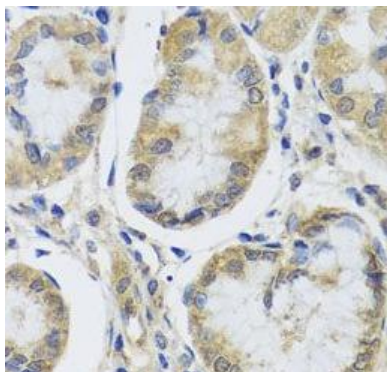
Application

Reactivity:	Human
-------------	-------

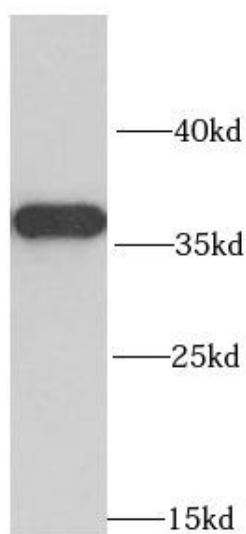
Tested Application: ELISA, WB, IHC

Recommended dilution: WB: 1:500 - 1:2000; IHC: 1:20 - 1:200

Image:



Immunohistochemistry of paraffin-embedded human stomach tissue slide using FNab05312(MRPL1 Antibody) at dilution of 1:50



human liver tissue were subjected to SDS PAGE followed by western blot with FNab05312(MRPL1 antibody) at dilution of 1:1000