

## MPHOSPH6 antibody

### Product Information

Catalog No.:	FNab05282
Size:	100µg
Form:	liquid
Purification:	Immunogen affinity purified
Purity:	≥95% as determined by SDS-PAGE
Host:	Rabbit
Clonality:	polyclonal
Clone ID:	None
IsoType:	IgG
Storage:	PBS with 0.02% sodium azide and 50% glycerol pH 7.3, -20°C for 12 months(Avoid repeated freeze / thaw cycles.)

### Background

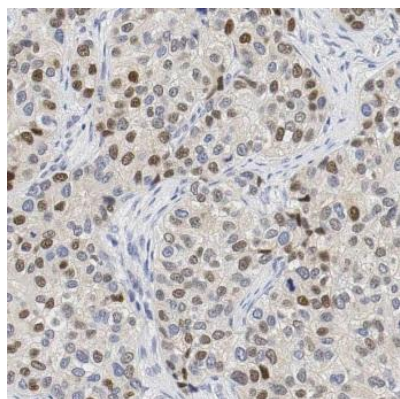
RNA-binding protein that associates with the RNA exosome complex. Involved in the 3'-processing of the 7S pre-rRNA to the mature 5.8S rRNA and may play a role in recruiting the RNA exosome complex to pre-rRNA; this function may include C1D.

### Immunogen information

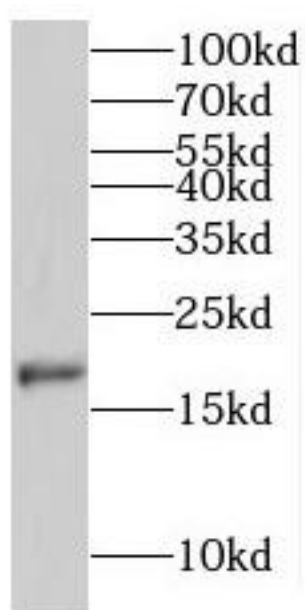
Immunogen:	M-phase phosphoprotein 6
Synonyms:	M-phase phosphoprotein 6 MPHOSPH6 MPP6
Observed MW:	19 kDa
Uniprot ID :	Q99547

### Application

Reactivity:	Human, Mouse, Rat
Tested Application:	ELISA, WB, IHC
Recommended dilution:	WB: 1:500-1:2000; IHC: 1:20-1:200
Image:	



Immunohistochemistry of paraffin-embedded human breast cancer using FNab05282(MPHOSPH6 antibody) at dilution of 1:50



MCF7 cells were subjected to SDS PAGE followed by western blot with FNab05282(MPHOSPH6 antibody) at dilution of 1:300