

MMP14 antibody

Product Information

Catalog No.:	FNab05236
Size:	100µg
Form:	liquid
Purification:	Immunogen affinity purified
Purity:	≥95% as determined by SDS-PAGE
Host:	Rabbit
Clonality:	polyclonal
Clone ID:	None
IsoType:	IgG
Storage:	PBS with 0.02% sodium azide and 50% glycerol pH 7.3, -20°C for 12 months (Avoid repeated freeze / thaw cycles.)

Background

Proteins of the matrix metalloproteinase (MMP) family are involved in the breakdown of extracellular matrix in normal physiological processes, such as embryonic development, reproduction, and tissue remodeling, as well as in disease processes, such as arthritis and metastasis. Most MMPs are secreted as inactive proproteins which are activated when cleaved by extracellular proteinases. However, the protein encoded by this gene is a member of the membrane-type MMP (MT-MMP) subfamily; each member of this subfamily contains a potential transmembrane domain suggesting that these proteins are expressed at the cell surface rather than secreted. This protein activates MMP2 protein, and this activity may be involved in tumor invasion.

Immunogen information

Immunogen:	matrix metalloproteinase 14 (membrane-inserted)
Synonyms:	Matrix metalloproteinase-14 (MMP-14) MMP-X1 Membrane-type matrix metalloproteinase 1 (MT-MMP 1, MTMMP1) Membrane-type-1 matrix metalloproteinase (MT1-MMP, MT1MMP) MMP14
Observed MW:	65 kDa
Uniprot ID :	P50281

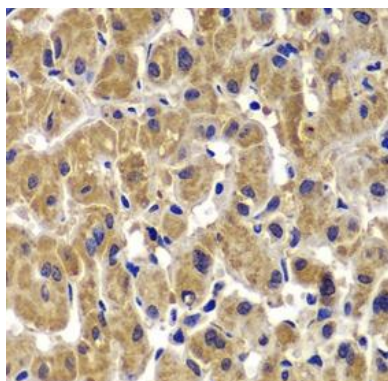
Application

Reactivity:	Human, Mouse, Rat
-------------	-------------------

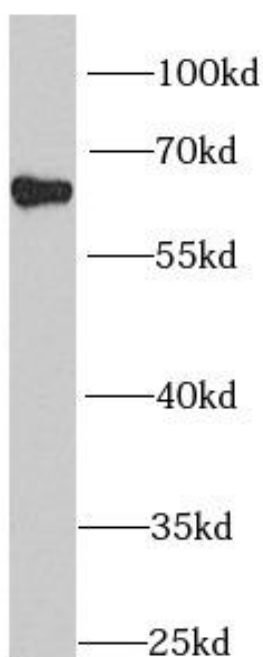
Tested Application: ELISA, WB, IHC

Recommended dilution: WB: 1:500 - 1:2000; IHC: 1:50 - 1:100

Image:



Immunohistochemistry of paraffin-embedded human liver cancer using FNab05236(MMP14 Antibody) at dilution of 1:100



mouse liver tissue were subjected to SDS PAGE followed by western blot with FNab05236(MMP14 antibody) at dilution of 1:1000