

## MME antibody

### Product Information

Catalog No.:	FNab05232
Size:	100µg
Form:	liquid
Purification:	Protein A+G purification
Purity:	≥95% as determined by SDS-PAGE
Host:	Mouse
Clonality:	monoclonal
Clone ID:	1H6
IsoType:	IgG2a
Storage:	PBS with 0.02% sodium azide and 50% glycerol pH 7.3, -20°C for 12 months(Avoid repeated freeze / thaw cycles.)

### Background

MME is also names as neprilysin,CALLA,NEP,SFE,CD10 and belongs to the peptidase M13 family.It is a glycoprotein that is particularly abundant in kidney, where it is present on the brush border of proximal tubules and on glomerular epithelium.CD10 has been considered a useful marker in the diagnosis of renal carcinomas, because of its expression in clear cell and papillary renal cell carcinomas and its absence in chromophobe renal cell carcinomas(PMID:15286660).This antibody is specific to MME.

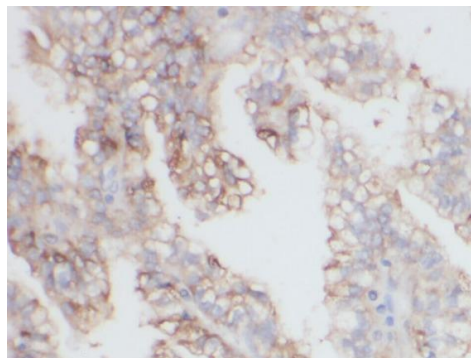
### Immunogen information

Immunogen:	membrane metallo-endorpeptidase
Synonyms:	Neprilysin Atriopeptidase Common acute lymphocytic leukemia antigen (CALLA) Enkephalinase Neutral endopeptidase 24.11 (NEP, Neutral endopeptidase) Skin fibroblast elastase (SFE) MME EPN
Observed MW:	90-110 kDa
Uniprot ID :	P08473

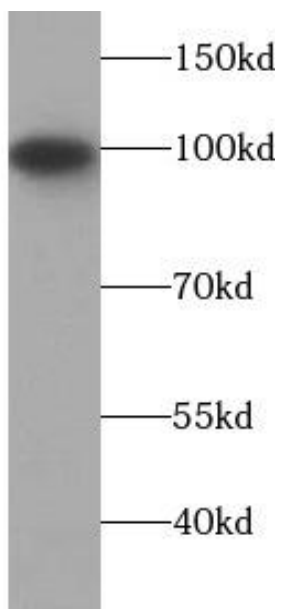
### Application

Reactivity:	Human, Pig
Tested Application:	ELISA, IHC, WB
Recommended dilution:	WB: 1:500-1:5000; IHC: 1:20-1:200

Image:



Immunohistochemistry of paraffin-embedded human renal cell carcinoma using FNab05232(MME,CD10 antibody) at dilution of 1:100



pig kidney tissue were subjected to SDS PAGE followed by western blot with FNab05232(MME,CD10 Antibody) at dilution of 1:1000