

## MLN antibody

### Product Information

Catalog No.:	FNab05219
Size:	100µg
Form:	liquid
Purification:	Immunogen affinity purified
Purity:	≥95% as determined by SDS-PAGE
Host:	Rabbit
Clonality:	polyclonal
Clone ID:	None
IsoType:	IgG
Storage:	PBS with 0.02% sodium azide and 50% glycerol pH 7.3, -20°C for 12 months (Avoid repeated freeze / thaw cycles.)

### Background

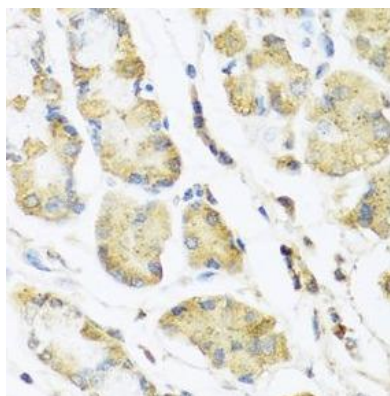
This gene encodes a small peptide hormone that is secreted by cells of the small intestine to regulate gastrointestinal contractions and motility. Proteolytic processing of the secreted protein produces the mature peptide and a byproduct referred to as motilin-associated peptide (MAP). Three transcript variants encoding different preproprotein isoforms but the same mature peptide have been found for this gene.

### Immunogen information

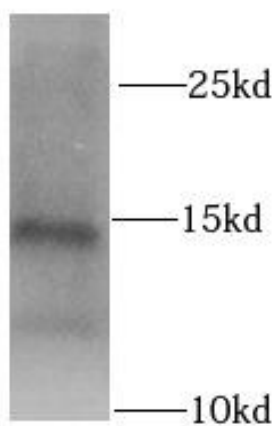
Immunogen:	motilin
Synonyms:	Promotilin Motilin Motilin-associated peptide (MAP) MLN
Observed MW:	13 kDa
Uniprot ID :	P12872

### Application

Reactivity:	Human, Mouse
Tested Application:	ELISA, WB, IHC, IF
Recommended dilution:	WB: 1:500 - 1:2000; IHC: 1:50 - 1:100; IF: 1:50 - 1:100
Image:	



Immunohistochemistry of paraffin-embedded human stomach using FNab05219(MLN antibody) at dilution of 1:100



MCF7 cells were subjected to SDS PAGE followed by western blot with FNab05219(MLN antibody) at dilution of 1:1000