

MLH1 antibody

Product Information

Catalog No.:	FNab05213
Size:	100µg
Form:	liquid
Purification:	Immunogen affinity purified
Purity:	≥95% as determined by SDS-PAGE
Host:	Rabbit
Clonality:	polyclonal
Clone ID:	None
IsoType:	IgG
Storage:	PBS with 0.02% sodium azide and 50% glycerol pH 7.3, -20°C for 12 months(Avoid repeated freeze / thaw cycles.)

Background

Heterodimerizes with PMS2 to form MutL alpha, a component of the post-replicative DNA mismatch repair system(MMR). DNA repair is initiated by MutS alpha(MSH2-MSH6) or MutS beta(MSH2-MSH6) binding to a dsDNA mismatch, then MutL alpha is recruited to the heteroduplex. Assembly of the MutL-MutS-heteroduplex ternary complex in presence of RFC and PCNA is sufficient to activate endonuclease activity of PMS2. It introduces single-strand breaks near the mismatch and thus generates new entry points for the exonuclease EXO1 to degrade the strand containing the mismatch. DNA methylation would prevent cleavage and therefore assure that only the newly mutated DNA strand is going to be corrected. MutL alpha(MLH1-PMS2) interacts physically with the clamp loader subunits of DNA polymerase III, suggesting that it may play a role to recruit the DNA polymerase III to the site of the MMR. Also implicated in DNA damage signaling, a process which induces cell cycle arrest and can lead to apoptosis in case of major DNA damages. Heterodimerizes with MLH3 to form MutL gamma which plays a role in meiosis.

Immunogen information

Immunogen:	MutL protein homolog 1
Synonyms:	DNA mismatch repair protein Mlh1 MutL protein homolog 1 MLH1 COCA2
Observed MW:	85 kDa
Uniprot ID :	P40692

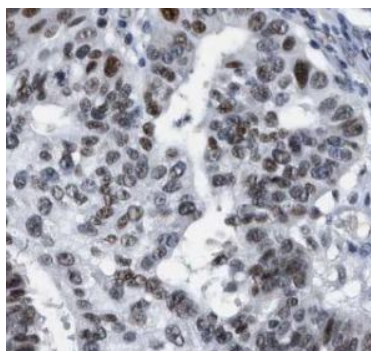
Application

Reactivity:	Human, Mouse, Rat
-------------	-------------------

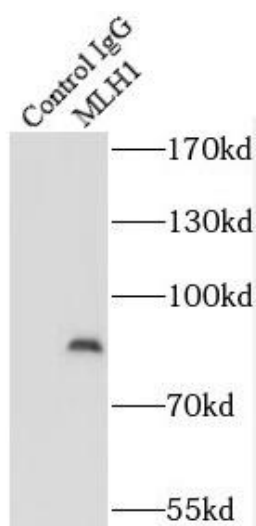
Tested Application: ELISA, WB, IHC, IP

Recommended dilution: WB: 1:500-1:2000; IP: 1:500-1:1000; IHC: 1:20-1:200; IF: 1:50-1:500

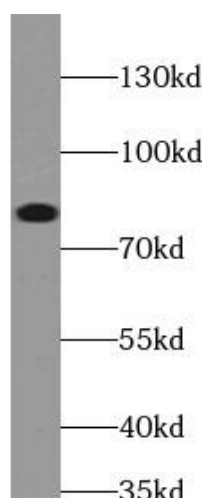
Image:



Immunohistochemistry of paraffin-embedded human ovary tumor using FNab05213(MLH1 antibody) at dilution of 1:50



IP Result of anti-MLH1 (IP:FNab05213, 3ug; Detection:FNab05213 1:500) with HeLa cells lysate 3200ug.



HEK-293 cells were subjected to SDS PAGE followed by western blot with FNab05213(MLH1 antibody) at dilution of 1:500