

## GRM1 antibody

### Product Information

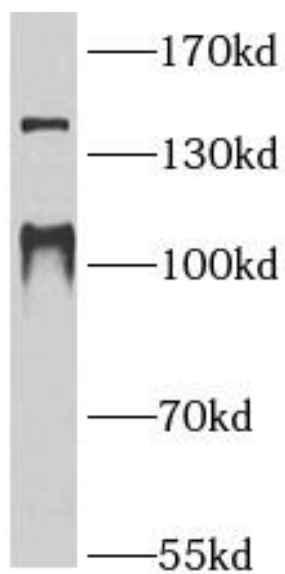
|               |  |
|---------------|--|
| Catalog No.:  | FNab05166  |
| Size:         | 100µg  |
| Form:         | liquid   |
| Purification: | Immunogen affinity purified  |
| Purity:       | ≥95% as determined by SDS-PAGE   |
| Host:         | Rabbit   |
| Clonality:    | polyclonal   |
| Clone ID:     | None   |
| IsoType:      | IgG  |
| Storage:      | PBS with 0.02% sodium azide and 50% glycerol pH 7.3, -20°C for 12 months(Avoid repeated freeze / thaw cycles.) |

### Immunogen information

|              |   |
|--------------|---|
| Immunogen:   | glutamate receptor, metabotropic 1                            |
| Synonyms:    | Metabotropic glutamate receptor 1 (mGluR1) GRM1 GPRC1A MGLUR1 |
| Observed MW: | 102 kDa, 132 kDa  |
| Uniprot ID : | Q13255  |

### Application

|                           |                   |
|---------------------------|-------------------|
| Reactivity:               | Human, Mouse, Rat |
| Tested Application:       | ELISA, WB         |
| Recommended dilution: WB: | 1:500-1:2000      |
| Image:                    |                   |



MCF7 cells were subjected to SDS PAGE followed by western blot with FNab05166 (GRM1 antibody) at dilution of 1:1000