

METTL9 antibody

Product Information

| | |
|---------------|--|
| Catalog No.: | FNab05144 |
| Size: | 100µg |
| Form: | liquid |
| Purification: | Immunogen affinity purified |
| Purity: | ≥95% as determined by SDS-PAGE |
| Host: | Rabbit |
| Clonality: | polyclonal |
| Clone ID: | None |
| IsoType: | IgG |
| Storage: | PBS with 0.02% sodium azide and 50% glycerol pH 7.3, -20°C for 12 months(Avoid repeated freeze / thaw cycles.) |

Background

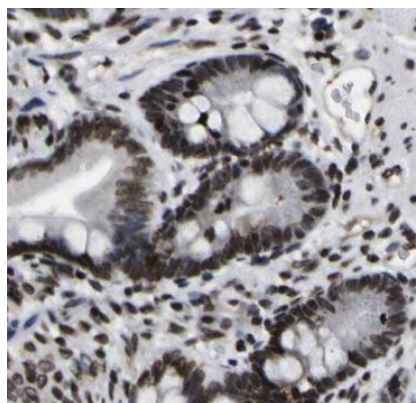
None

Immunogen information

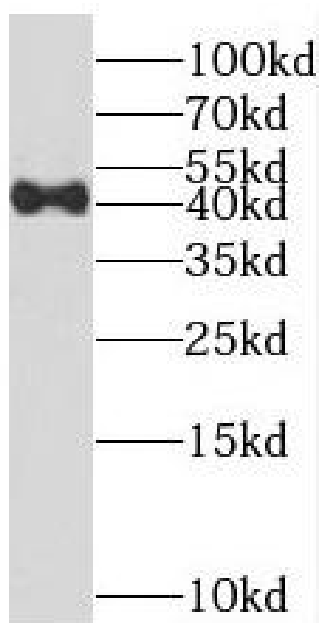
| | |
|--------------|---|
| Immunogen: | methyltransferase like 9 |
| Synonyms: | Protein-L-histidine N-pros-methyltransferase DORA reverse strand protein (DREV, DREV1) Methyltransferase-like protein 9 (hMETTL9) METTL9 DREV |
| Observed MW: | 40-45 kDa |
| Uniprot ID : | Q9H1A3 |

Application

| | |
|-----------------------|---|
| Reactivity: | Human, Mouse, Rat |
| Tested Application: | ELISA, IF, IHC, WB |
| Recommended dilution: | WB: 1:500-1:2000; IHC: 1:20-1:200; IF: 1:20-1:200 |
| Image: | |



Immunohistochemistry of paraffin-embedded human colon tissue slide using FNab05144(METTL9 Antibody) at dilution of 1:50



HEK-293 cells were subjected to SDS PAGE followed by western blot with FNab05144(METTL9 Antibody) at dilution of 1:600