

## MLPH antibody

### Product Information

Catalog No.:	FNab05121
Size:	100µg
Form:	liquid
Purification:	Protein A+G purification
Purity:	≥95% as determined by SDS-PAGE
Host:	Mouse
Clonality:	monoclonal
Clone ID:	8B2
IsoType:	IgG2a
Storage:	PBS with 0.02% sodium azide and 50% glycerol pH 7.3, -20°C for 12 months(Avoid repeated freeze / thaw cycles.)

### Background

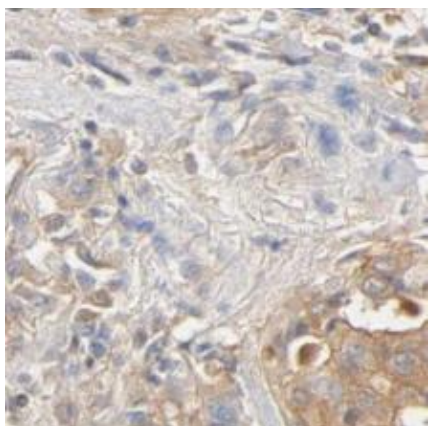
None

### Immunogen information

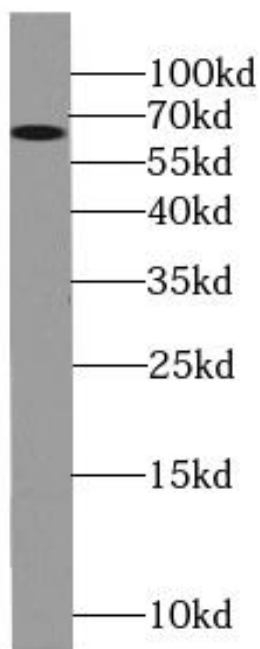
Immunogen:	melanophilin
Synonyms:	Melanophilin Exophilin-3 Slp homolog lacking C2 domains a (Slac2-a) Synaptotagmin-like protein 2a MLPH SLAC2A
Observed MW:	66 kDa
Uniprot ID :	Q9BV36

### Application

Reactivity:	Human
Tested Application:	ELISA, WB, IF, IHC
Recommended dilution:	WB: 1:1000-1:6000; IHC: 1:20-1:200; IF: 1:10-1:100
Image:	



Immunohistochemistry of paraffin-embedded human skin cancer slide using FNab05121(MLPH Antibody) at dilution of 1:50



PC-3 cells were subjected to SDS PAGE followed by western blot with FNab05121(MLPH antibody) at dilution of 1:1000