

CCL2 antibody

Product Information

Catalog No.:	FNab05065
Size:	100µg
Form:	liquid
Purification:	Immunogen affinity purified
Purity:	≥95% as determined by SDS-PAGE
Host:	Rabbit
Clonality:	polyclonal
Clone ID:	None
IsoType:	IgG
Storage:	PBS with 0.02% sodium azide and 50% glycerol pH 7.3, -20°C for 12 months(Avoid repeated freeze / thaw cycles.)

Background

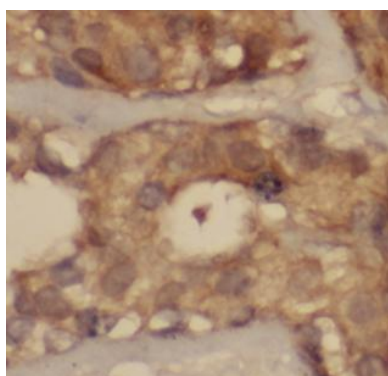
None

Immunogen information

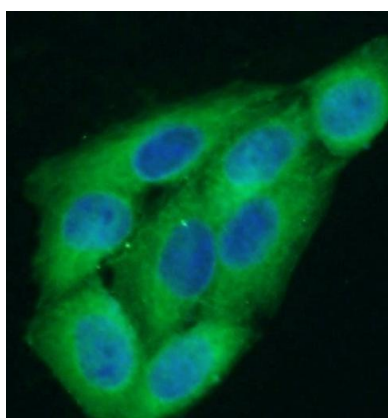
Immunogen:	chemokine(C-C motif) ligand 2
Synonyms:	C-C motif chemokine 2 HC11 Monocyte chemoattractant protein 1 Monocyte chemotactic and activating factor (MCAF) Monocyte chemotactic protein 1 (MCP-1) Monocyte secretory protein JE Small-inducible cytokine A2 CCL2 MCP1 SCYA2
Observed MW:	11 kDa, 13 kDa, 25 kDa
Uniprot ID :	P13500

Application

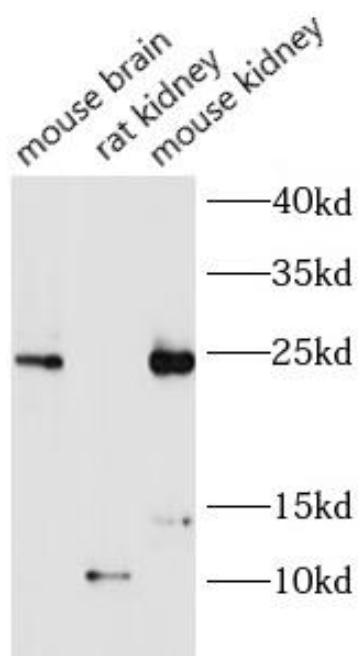
Reactivity:	Human, Mouse, Rat
Tested Application:	ELISA, WB, IHC, IF
Recommended dilution:	WB: 1:200-1:1000; IHC: 1:50 - 1:200; IF: 1:20-1:200
Image:	



Immunohistochemistry of paraffin-embedded human breast cancer tissue slide using FNab05065(MCP1 antibody) at dilution of 1:100



Immunofluorescent analysis of HeLa cells using FNab05065(MCP1 Antibody) at dilution of 1:50 and Alexa Fluor 488-conjugated Goat Anti-Rabbit IgG(H+L)



Various lysates were subjected to SDS PAGE followed by western blot with FNab05065(MCP1 Antibody) at dilution of 1:500