

MCM3 antibody

Product Information

Catalog No.:	FNab05058
Size:	100µg
Form:	liquid
Purification:	Immunogen affinity purified
Purity:	≥95% as determined by SDS-PAGE
Host:	Rabbit
Clonality:	polyclonal
Clone ID:	None
IsoType:	IgG
Storage:	PBS with 0.02% sodium azide and 50% glycerol pH 7.3, -20°C for 12 months (Avoid repeated freeze / thaw cycles.)

Background

The protein encoded by this gene is one of the highly conserved mini-chromosome maintenance proteins (MCM) that are involved in the initiation of eukaryotic genome replication. The hexameric protein complex formed by MCM proteins is a key component of the pre-replication complex (pre_RC) and may be involved in the formation of replication forks and in the recruitment of other DNA replication related proteins. This protein is a subunit of the protein complex that consists of MCM2-7. It has been shown to interact directly with MCM5/CDC46. This protein also interacts with and is acetylated by MCM3AP, a chromatin-associated acetyltransferase. The acetylation of this protein inhibits the initiation of DNA replication and cell cycle progression. Two transcript variants encoding different isoforms have been found for this gene.

Immunogen information

Immunogen:	minichromosome maintenance complex component 3
Synonyms:	DNA replication licensing factor MCM3 DNA polymerase alpha holoenzyme-associated protein P1 P1-MCM3 RLF subunit beta p102 MCM3
Observed MW:	105 kDa
Uniprot ID :	P25205

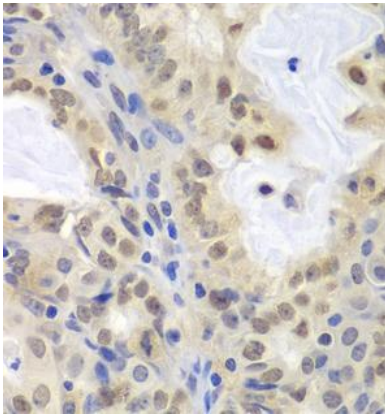
Application

Reactivity: Human, Mouse, Monkey

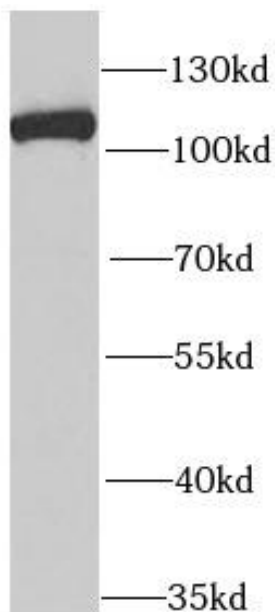
Tested Application: ELISA, WB, IHC, IF

Recommended dilution: WB: 1:500 - 1:2000; IHC: 1:50 - 1:200; IF: 1:50 - 1:200

Image:



Immunohistochemistry of paraffin-embedded human oophoroma using FNab05058(MCM3 Antibody) at dilution of 1:100



HeLa cells were subjected to SDS PAGE followed by western blot with FNab05058(MCM3 antibody) at dilution of 1:1000