

## MCL1 antibody

### Product Information

Catalog No.:	FNab05052
Size:	100µg
Form:	liquid
Purification:	Immunogen affinity purified
Purity:	≥95% as determined by SDS-PAGE
Host:	Rabbit
Clonality:	polyclonal
Clone ID:	None
IsoType:	IgG
Storage:	PBS with 0.02% sodium azide and 50% glycerol pH 7.3, -20°C for 12 months (Avoid repeated freeze / thaw cycles.)

### Background

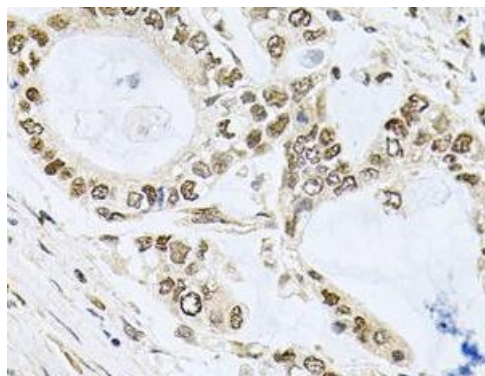
This gene encodes an anti- apoptotic protein, which is a member of the Bcl-2 family. Alternative splicing results in multiple transcript variants. The longest gene product (isoform 1) enhances cell survival by inhibiting apoptosis while the alternatively spliced shorter gene products (isoform 2 and isoform 3) promote apoptosis and are death-inducing.

### Immunogen information

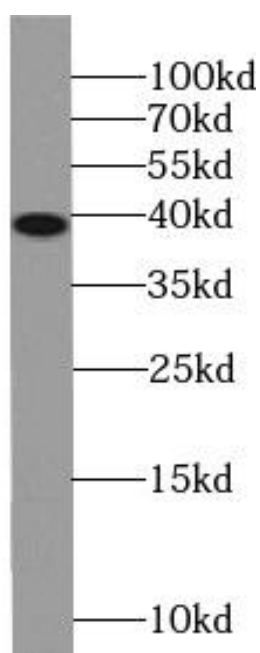
Immunogen:	myeloid cell leukemia sequence 1 (BCL2-related)
Synonyms:	Induced myeloid leukemia cell differentiation protein Mcl-1 Bcl-2-like protein 3 (Bcl2-L-3) Bcl-2-related protein EAT/mcl1 mcl1/EAT MCL1 BCL2L3
Observed MW:	37 kDa
Uniprot ID :	Q07820

### Application

Reactivity:	Human, Mouse
Tested Application:	ELISA, WB, IHC
Recommended dilution:	WB: 1:500 - 1:2000; IHC: 1:100 - 1:200
Image:	



Immunohistochemistry of paraffin-embedded human lung cancer using FNa05052( MCL1 Antibody) at dilution of 1:100



Raji cells were subjected to SDS PAGE followed by western blot with FNa05052(MCL1 antibody) at dilution of 1:1000