

MCHR1 antibody

Product Information

Catalog No.:	FNab05050
Size:	100µg
Form:	liquid
Purification:	Immunogen affinity purified
Purity:	≥95% as determined by SDS-PAGE
Host:	Rabbit
Clonality:	polyclonal
Clone ID:	None
IsoType:	IgG
Storage:	PBS with 0.02% sodium azide and 50% glycerol pH 7.3, -20°C for 12 months(Avoid repeated freeze / thaw cycles.)

Background

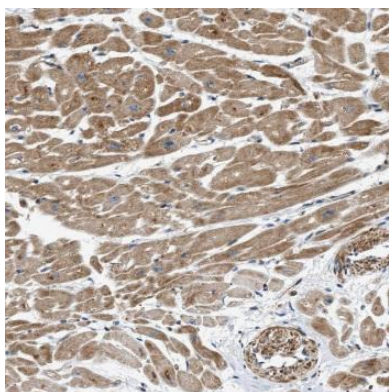
Receptor for melanin-concentrating hormone, coupled to both G proteins that inhibit adenylyl cyclase and G proteins that activate phosphoinositide hydrolysis.

Immunogen information

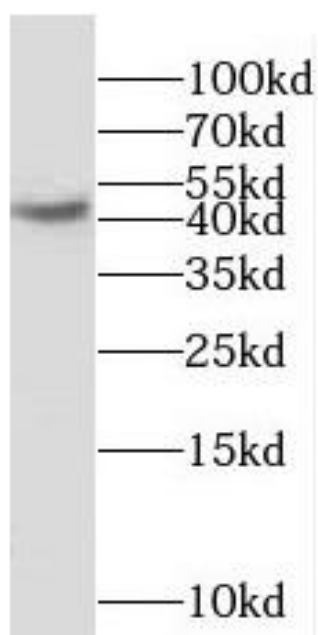
Immunogen:	melanin-concentrating hormone receptor 1
Synonyms:	Melanin-concentrating hormone receptor 1 (MCH receptor 1, MCH-R1, MCHR-1) G-protein coupled receptor 24 MCH-1R (MCH1R, MCHR) SLC-1 Somatostatin receptor-like protein MCHR1 GPR24 SLC1
Observed MW:	46 kDa
Uniprot ID :	Q99705

Application

Reactivity:	Human
Tested Application:	ELISA, WB, IHC
Recommended dilution:	WB: 1:500-1:2000; IHC: 1:20-1:200
Image:	



Immunohistochemistry of paraffin-embedded human heart tissue slide using FNab05050(MCHR1 Antibody) at dilution of 1:50



SH-SY5Y cells were subjected to SDS PAGE followed by western blot with FNab05050(MCHR1 Antibody) at dilution of 1:1000