

MCCC1 antibody

Product Information

Catalog No.:	FNab05047
Size:	100µg
Form:	liquid
Purification:	Immunogen affinity purified
Purity:	≥95% as determined by SDS-PAGE
Host:	Rabbit
Clonality:	polyclonal
Clone ID:	None
IsoType:	IgG
Storage:	PBS with 0.02% sodium azide and 50% glycerol pH 7.3, -20°C for 12 months(Avoid repeated freeze / thaw cycles.)

Background

Biotin-attachment subunit of the 3-methylcrotonyl-CoA carboxylase, an enzyme that catalyzes the conversion of 3-methylcrotonyl-CoA to 3-methylglutaconyl-CoA, a critical step for leucine and isovaleric acid catabolism.

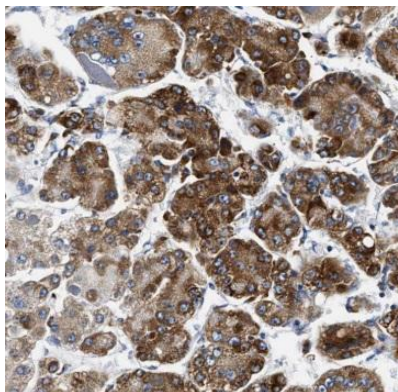
Immunogen information

Immunogen:	methylcrotonoyl-Coenzyme A carboxylase 1(alpha)
Synonyms:	Methylcrotonoyl-CoA carboxylase subunit alpha, mitochondrial (MCCase subunit alpha) 3-methylcrotonyl-CoA carboxylase 1 3-methylcrotonyl-CoA carboxylase biotin-containing subunit 3-methylcrotonyl-CoA:carbon dioxide ligase subunit alpha MCCC1 MCCA
Observed MW:	70-76 kDa
Uniprot ID :	Q96RQ3

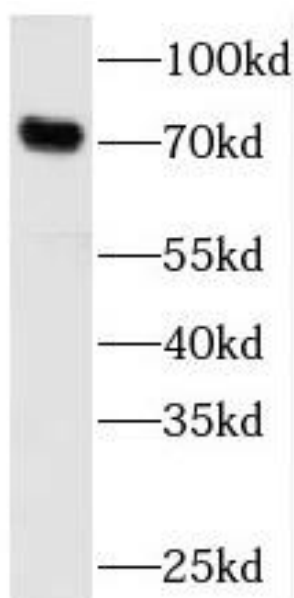
Application

Reactivity:	Human, Mouse, Rat
Tested Application:	ELISA, WB, IHC
Recommended dilution:	WB: 1:500-1:2000; IHC: 1:20-1:200

Image:



Immunohistochemistry of paraffin-embedded human liver cancer using FNa05047(MCCC1 antibody) at dilution of 1:100



mouse liver tissue were subjected to SDS PAGE followed by western blot with FNa05047(MCCC1 antibody) at dilution of 1:1200