

MAT2B antibody

Product Information

Catalog No.:	FNab05028
Size:	100µg
Form:	liquid
Purification:	Immunogen affinity purified
Purity:	≥95% as determined by SDS-PAGE
Host:	Rabbit
Clonality:	polyclonal
Clone ID:	None
IsoType:	IgG
Storage:	PBS with 0.02% sodium azide and 50% glycerol pH 7.3, -20°C for 12 months(Avoid repeated freeze / thaw cycles.)

Background

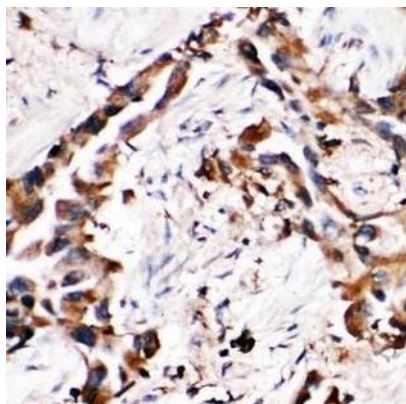
Non-catalytic regulatory subunit of S-adenosylmethionine synthetase 2(MAT2A), an enzyme that catalyzes the formation of S-adenosylmethionine from methionine and ATP. Regulates the activity of S-adenosylmethionine synthetase 2 by changing its kinetic properties, rendering the enzyme more susceptible to S-adenosylmethionine inhibition.

Immunogen information

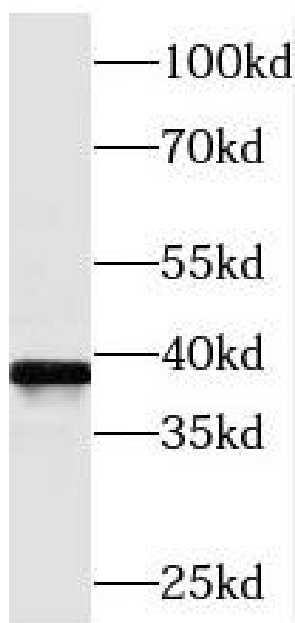
Immunogen:	methionine adenosyltransferase II, beta
Synonyms:	Methionine adenosyltransferase 2 subunit beta Methionine adenosyltransferase II beta (MAT II beta) Putative dTDP-4-keto-6-deoxy-D-glucose 4-reductase MAT2B TGR
Observed MW:	38 kDa
Uniprot ID :	Q9NZL9

Application

Reactivity:	Human, Mouse, Rat
Tested Application:	ELISA, WB, IHC, IF
Recommended dilution:	WB: 1:500-1:2000; IHC: 1:20-1:200; IF: 1:20-1:200
Image:	



Immunohistochemistry of paraffin-embedded human lung using FNab05028(MAT2B antibody) at dilution of 1:100



HepG2 cells were subjected to SDS PAGE followed by western blot with FNab05028(MAT2B antibody) at dilution of 1:800