

MAT1A antibody

Product Information

Catalog No.:	FNab05026
Size:	100µg
Form:	liquid
Purification:	Immunogen affinity purified
Purity:	≥95% as determined by SDS-PAGE
Host:	Rabbit
Clonality:	polyclonal
Clone ID:	None
IsoType:	IgG
Storage:	PBS with 0.02% sodium azide and 50% glycerol pH 7.3, -20°C for 12 months (Avoid repeated freeze / thaw cycles.)

Background

This gene catalyzes a two-step reaction that involves the transfer of the adenosyl moiety of ATP to methionine to form S-adenosylmethionine and triphosphosphate, which is subsequently cleaved to PPi and Pi. S-adenosylmethionine is the source of methyl groups for most biological methylations. The encoded protein is found as a homotetramer (MAT I) or a homodimer (MAT III) whereas a third form, MAT II (gamma), is encoded by the MAT2A gene. Mutations in this gene are associated with methionine adenosyltransferase deficiency.

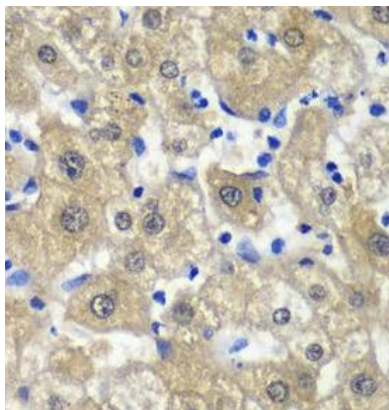
Immunogen information

Immunogen:	methionine adenosyltransferase I, alpha
Synonyms:	S-adenosylmethionine synthase isoform type-1 (AdoMet synthase 1) Methionine adenosyltransferase 1 (MAT 1) Methionine adenosyltransferase I/III (MAT-I/III) MAT1A AMS1 MATA1
Observed MW:	44 kDa
Uniprot ID :	Q00266

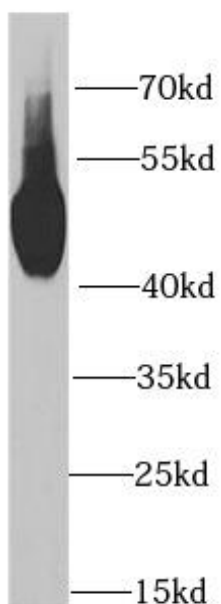
Application

Reactivity:	Human, Mouse, Rat
Tested Application:	ELISA, WB, IHC
Recommended dilution:	WB: 1:500 - 1:2000; IHC: 1:50 - 1:200

Image:



Immunohistochemistry of paraffin-embedded human liver injury using FNab05026(MAT1A antibody) at dilution of 1:200



mouse liver tissue were subjected to SDS PAGE followed by western blot with FNab05026(MAT1A antibody) at dilution of 1:1000