

## MALT1 antibody

### Product Information

Catalog No.:	FNab04958
Size:	100µg
Form:	liquid
Purification:	Immunogen affinity purified
Purity:	≥95% as determined by SDS-PAGE
Host:	Rabbit
Clonality:	polyclonal
Clone ID:	None
IsoType:	IgG
Storage:	PBS with 0.02% sodium azide and 50% glycerol pH 7.3, -20°C for 12 months(Avoid repeated freeze / thaw cycles.)

### Background

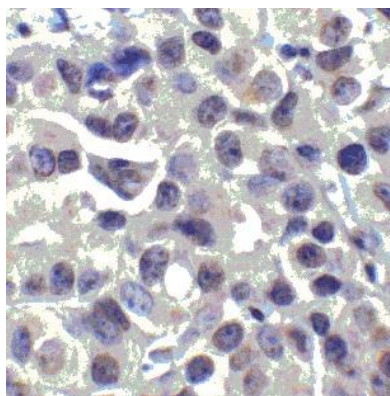
Enhances BCL10-induced activation of NF-kappa-B. Involved in nuclear export of BCL10. Binds to TRAF6, inducing TRAF6 oligomerization and activation of its ligase activity. Has ubiquitin ligase activity. MALT1-dependent BCL10 cleavage plays an important role in T-cell antigen receptor-induced integrin adhesion.

### Immunogen information

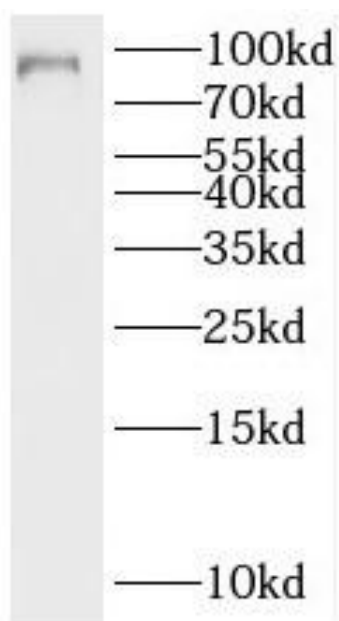
Immunogen:	mucosa associated lymphoid tissue lymphoma translocation gene 1
Synonyms:	Mucosa-associated lymphoid tissue lymphoma translocation protein 1 MALT lymphoma-associated translocation Paracaspase MALT1 MLT
Observed MW:	90 kDa
Uniprot ID :	Q9UDY8

### Application

Reactivity:	Human, Mouse, Rat
Tested Application:	ELISA, IHC, IF, WB, FC
Recommended dilution:	WB: 1:500-1:2000; IHC: 1:20-1:200; IF: 1:20-1:200
Image:	



Immunohistochemistry of paraffin-embedded human lymphoma using FNab04958(MALT1 antibody) at dilution of 1:50



HeLa cells were subjected to SDS PAGE followed by western blot with FNab04958(MALT1 antibody) at dilution of 1:600