

MAGT1 antibody

Product Information

| | |
|---------------|--|
| Catalog No.: | FNab04955 |
| Size: | 100µg |
| Form: | liquid |
| Purification: | Immunogen affinity purified |
| Purity: | ≥95% as determined by SDS-PAGE |
| Host: | Rabbit |
| Clonality: | polyclonal |
| Clone ID: | None |
| IsoType: | IgG |
| Storage: | PBS with 0.02% sodium azide and 50% glycerol pH 7.3, -20°C for 12 months(Avoid repeated freeze / thaw cycles.) |

Background

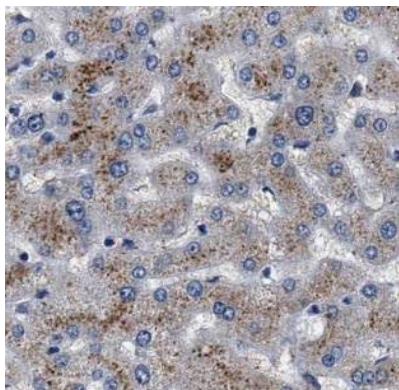
May be involved in N-glycosylation through its association with N-oligosaccharyl transferase.
May be involved in Mg(2+) transport in epithelial cells.

Immunogen information

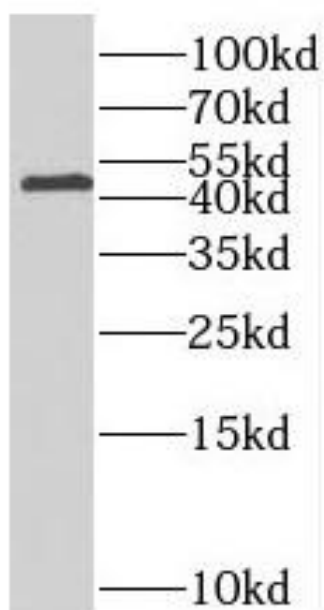
| | |
|--------------|--|
| Immunogen: | magnesium transporter 1 |
| Synonyms: | Magnesium transporter protein 1 (MagT1) Dolichyl-diphosphooligosaccharide--protein glycosyltransferase subunit MAGT1 (Oligosaccharyl transferase subunit MAGT1) Implantation-associated protein (IAP) MAGT1 IAG2 |
| Observed MW: | 45-47 kDa |
| Uniprot ID : | Q9H0U3 |

Application

| | |
|-----------------------|---|
| Reactivity: | Human, Mouse, Rat |
| Tested Application: | ELISA, WB, IHC, IF |
| Recommended dilution: | WB: 1:500-1:2000; IHC: 1:20-1:200; IF: 1:20-1:200 |
| Image: | |



Immunohistochemistry of paraffin-embedded human liver using FNab04955(MAGT1 antibody) at dilution of 1:50



Jurkat cells were subjected to SDS PAGE followed by western blot with FNab04955(MAGT1 antibody) at dilution of 1:1000