

MAGED1 antibody

Product Information

Catalog No.:	FNab04946
Size:	100µg
Form:	liquid
Purification:	Immunogen affinity purified
Purity:	≥95% as determined by SDS-PAGE
Host:	Rabbit
Clonality:	polyclonal
Clone ID:	None
IsoType:	IgG
Storage:	PBS with 0.02% sodium azide and 50% glycerol pH 7.3, -20°C for 12 months (Avoid repeated freeze / thaw cycles.)

Background

This gene is a member of the melanoma antigen gene (MAGE) family. Most of the genes of this family encode tumor specific antigens that are not expressed in normal adult tissues except testis. Although the protein encoded by this gene shares strong homology with members of the MAGE family, it is expressed in almost all normal adult tissues. This gene has been demonstrated to be involved in the p75 neurotrophin receptor mediated programmed cell death pathway. Three transcript variants encoding two different isoforms have been found for this gene.

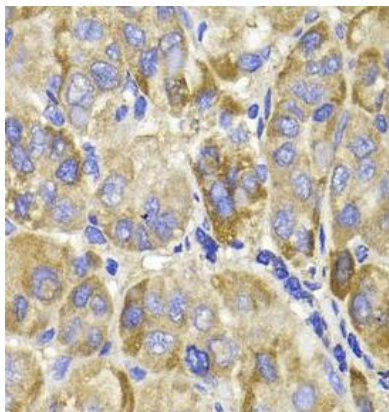
Immunogen information

Immunogen:	melanoma antigen family D, 1
Synonyms:	Melanoma-associated antigen D1 MAGE tumor antigen CCF MAGE-D1 antigen Neurotrophin receptor-interacting MAGE homolog MAGED1 NRAGE
Observed MW:	86KD
Uniprot ID :	Q9Y5V3

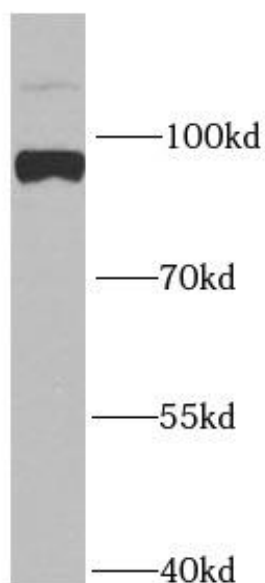
Application

Reactivity:	Human, Mouse, Rat
Tested Application:	ELISA, WB, IHC
Recommended dilution:	WB: 1:500 - 1:2000; IHC: 1:50 - 1:200

Image:



Immunohistochemistry of paraffin-embedded human liver cancer using FNab04946(MAGED1 antibody) at dilution of 1:50



A549 cells were subjected to SDS PAGE followed by western blot with FNab04946(MAGED1 Antibody) at dilution of 1:1000