

## MAD2L1BP antibody

### Product Information

Catalog No.:	FNab04925
Size:	100µg
Form:	liquid
Purification:	Immunogen affinity purified
Purity:	≥95% as determined by SDS-PAGE
Host:	Rabbit
Clonality:	polyclonal
Clone ID:	None
IsoType:	IgG
Storage:	PBS with 0.02% sodium azide and 50% glycerol pH 7.3, -20°C for 12 months(Avoid repeated freeze / thaw cycles.)

### Background

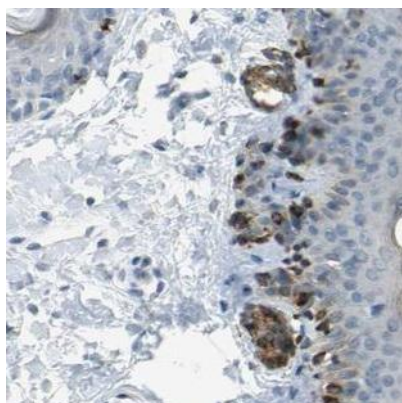
May function to silence the spindle checkpoint and allow mitosis to proceed through anaphase by binding MAD2L1 after it has become dissociated from the MAD2L1-CDC20 complex.

### Immunogen information

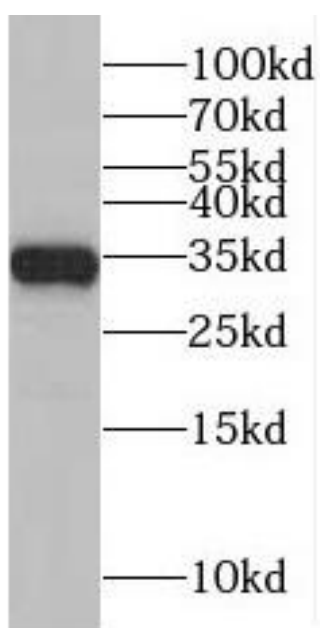
Immunogen:	MAD2L1 binding protein
Synonyms:	MAD2L1-binding protein Caught by MAD2 protein p31(comet) MAD2L1BP CMT2 KIAA0110
Observed MW:	34 kDa
Uniprot ID :	Q15013

### Application

Reactivity:	Human, Mouse, Rat
Tested Application:	ELISA, WB, IHC, IF
Recommended dilution:	WB: 1:500-1:2000; IHC: 1:20-1:200; IF: 1:20-1:200
Image:	



Immunohistochemistry of paraffin-embedded human skin using FNab04925(MAD2L1BP antibody) at dilution of 1:50



HeLa cells were subjected to SDS PAGE followed by western blot with FNab04925(MAD2L1BP antibody) at dilution of 1:800