

LRCH1 antibody

Product Information

Catalog No.:	FNab04839
Size:	100µg
Form:	liquid
Purification:	Immunogen affinity purified
Purity:	≥95% as determined by SDS-PAGE
Host:	Rabbit
Clonality:	polyclonal
Clone ID:	None
IsoType:	IgG
Storage:	PBS with 0.02% sodium azide and 50% glycerol pH 7.3, -20°C for 12 months(Avoid repeated freeze / thaw cycles.)

Background

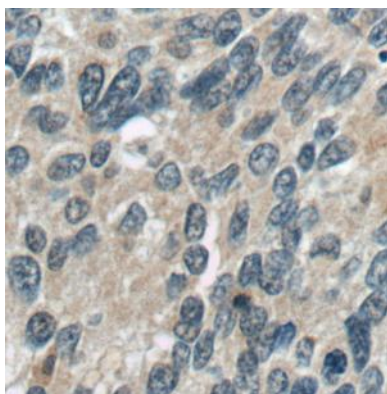
None

Immunogen information

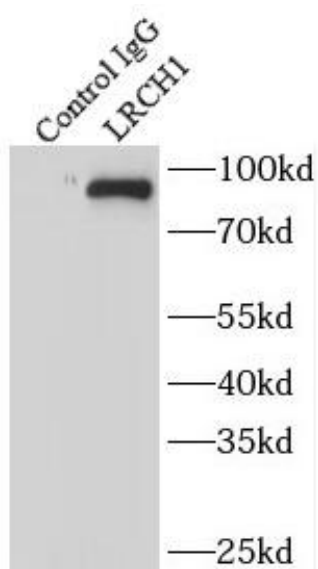
Immunogen:	leucine-rich repeats and calponin homology(CH) domain containing 1
Synonyms:	Leucine-rich repeat and calponin homology domain-containing protein 1 Calponin homology domain-containing protein 1 Neuronal protein 81 (NP81) LRCH1 CHDC1 KIAA1016
Observed MW:	85-95 kDa
Uniprot ID :	Q9Y2L9

Application

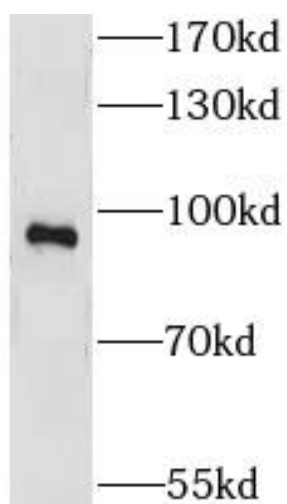
Reactivity:	Human
Tested Application:	ELISA, WB, IP, IHC, IF
Recommended dilution:	WB: 1:500-1:2000; IP: 1:200-1:1000; IHC: 1:20-1:200; IF: 1:20-1:200
Image:	



Immunohistochemistry of paraffin-embedded human cervical cancer tissue slide using FNab04839(LRCH1 Antibody) at dilution of 1:50



IP Result of anti-LRCH1 (IP:FNab04839, 4ug; Detection:FNab04839 1:300) with HeLa cells lysate 1600ug.



HeLa cells were subjected to SDS PAGE followed by western blot with FNab04839(LRCH1 Antibody) at dilution of 1:1000