

LCP1 antibody

Product Information

Catalog No.:	FNab04832
Size:	100µg
Form:	liquid
Purification:	Immunogen affinity purified
Purity:	≥95% as determined by SDS-PAGE
Host:	Rabbit
Clonality:	polyclonal
Clone ID:	None
IsoType:	IgG
Storage:	PBS with 0.02% sodium azide and 50% glycerol pH 7.3, -20°C for 12 months(Avoid repeated freeze / thaw cycles.)

Background

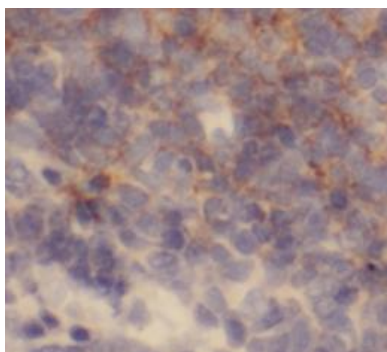
None

Immunogen information

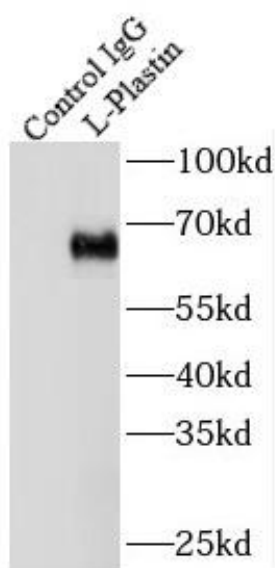
Immunogen:	lymphocyte cytosolic protein 1(L-plastin)
Synonyms:	Plastin-2 L-plastin LC64P Lymphocyte cytosolic protein 1 (LCP-1) LCP1 PLS2
Observed MW:	68 kDa
Uniprot ID :	P13796

Application

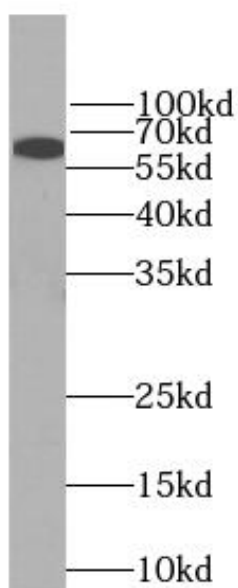
Reactivity:	Human, Mouse, Rat
Tested Application:	ELISA, WB, IHC, IP
Recommended dilution:	WB: 1:500-1:2000; IP: 1:500-1:2000; IHC: 1:20-1:200
Image:	



Immunohistochemistry of paraffin-embedded human lymphoma using FNab04832(LCP1 antibody) at dilution of 1:50



IP Result of anti-L-Plastin (IP:FNab04832, 4ug; Detection:FNab04832 1:1000) with Jurkat cells lysate 2400ug.



Jurkat cells were subjected to SDS PAGE followed by western blot with FNab04832(LCP1 antibody) at dilution of 1:1000