

LNPEP antibody

Product Information

| | |
|---------------|--|
| Catalog No.: | FNab04813 |
| Size: | 100µg |
| Form: | liquid |
| Purification: | Immunogen affinity purified |
| Purity: | ≥95% as determined by SDS-PAGE |
| Host: | Rabbit |
| Clonality: | polyclonal |
| Clone ID: | None |
| IsoType: | IgG |
| Storage: | PBS with 0.02% sodium azide and 50% glycerol pH 7.3, -20°C for 12 months(Avoid repeated freeze / thaw cycles.) |

Background

Release of an N-terminal amino acid, cleaves before cysteine, leucine as well as other amino acids. Degrades peptide hormones such as oxytocin, vasopressin and angiotensin III, and plays a role in maintaining homeostasis during pregnancy. May be involved in the inactivation of neuronal peptides in the brain. Cleaves Met-enkephalin and dynorphin. Binds angiotensin IV and may be the angiotensin IV receptor in the brain.

Immunogen information

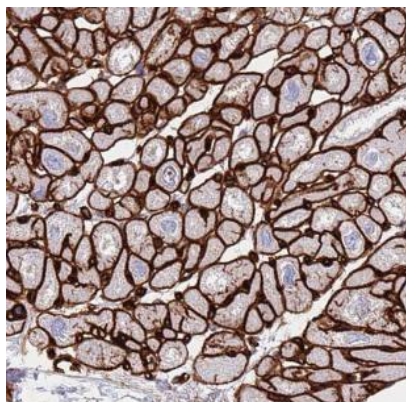
| | |
|--------------|---|
| Immunogen: | leucyl/cystinyl aminopeptidase |
| Synonyms: | Leucyl-cystinyl aminopeptidase (Cystinyl aminopeptidase) Insulin-regulated membrane aminopeptidase Insulin-responsive aminopeptidase (IRAP) Oxytocinase (OTase) Placental leucine aminopeptidase (P-LAP) Leucyl-cystinyl aminopeptidase, pregnancy serum form LNPEP OTASE |
| Observed MW: | 117-125 kDa |
| Uniprot ID : | Q9UIQ6 |

Application

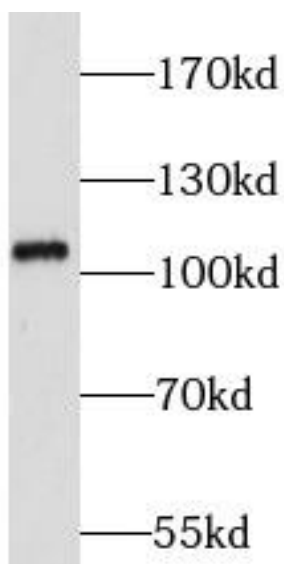
| | |
|---------------------|----------------|
| Reactivity: | Human |
| Tested Application: | ELISA, WB, IHC |

Recommended dilution: WB: 1:500-1:2000; IHC: 1:20-1:200

Image:



Immunohistochemistry of paraffin-embedded human heart using FNab04813(LNPEP antibody) at dilution of 1:50



human brain tissue were subjected to SDS PAGE followed by western blot with FNab04813(LNPEP antibody) at dilution of 1:800