

LMNB2 antibody

Product Information

Catalog No.:	FNab04807
Size:	100µg
Form:	liquid
Purification:	Immunogen affinity purified
Purity:	≥95% as determined by SDS-PAGE
Host:	Rabbit
Clonality:	polyclonal
Clone ID:	None
IsoType:	IgG
Storage:	PBS with 0.02% sodium azide and 50% glycerol pH 7.3, -20°C for 12 months (Avoid repeated freeze / thaw cycles.)

Background

This gene encodes a B type nuclear lamin. The nuclear lamina consists of a two-dimensional matrix of proteins located next to the inner nuclear membrane. The lamin family of proteins make up the matrix and are highly conserved in evolution. During mitosis, the lamina matrix is reversibly disassembled as the lamin proteins are phosphorylated. Lamin proteins are thought to be involved in nuclear stability, chromatin structure and gene expression. Vertebrate lamins consist of two types, A and B. Mutations in this gene are associated with acquired partial lipodystrophy.

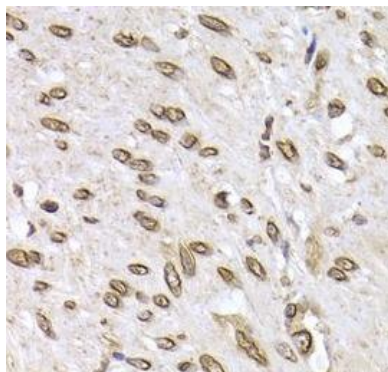
Immunogen information

Immunogen:	lamin B2
Synonyms:	Lamin-B2 LMNB2 LMN2
Observed MW:	70 kDa
Uniprot ID :	Q03252

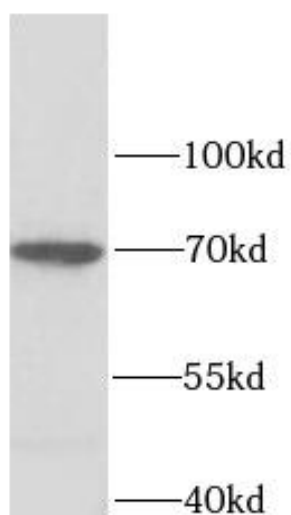
Application

Reactivity:	Human, Mouse, Rat
Tested Application:	ELISA, WB, IHC, IF
Recommended dilution:	WB: 1:500 - 1:2000; IHC: 1:50 - 1:200; IF: 1:50 - 1:100

Image:



Immunohistochemistry of paraffin-embedded human colon carcinoma using FNab04807(LMNB2 antibody) at dilution of 1:100



Jurkat cells were subjected to SDS PAGE followed by western blot with FNab04807(LMNB2 antibody) at dilution of 1:1000