

## LMAN1 antibody

### Product Information

Catalog No.:	FNab04803
Size:	100µg
Form:	liquid
Purification:	Immunogen affinity purified
Purity:	≥95% as determined by SDS-PAGE
Host:	Rabbit
Clonality:	polyclonal
Clone ID:	None
IsoType:	IgG
Storage:	PBS with 0.02% sodium azide and 50% glycerol pH 7.3, -20°C for 12 months(Avoid repeated freeze / thaw cycles.)

### Background

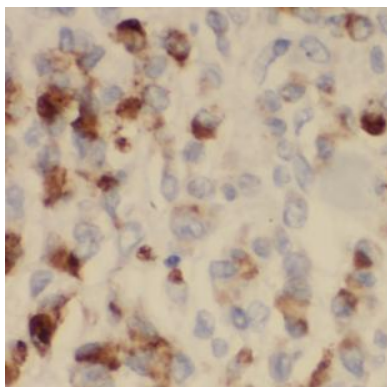
Mannose-specific lectin. May recognize sugar residues of glycoproteins, glycolipids, or glycosylphosphatidyl inositol anchors and may be involved in the sorting or recycling of proteins, lipids, or both. The LMAN1-MCFD2 complex forms a specific cargo receptor for the ER-to-Golgi transport of selected proteins.

### Immunogen information

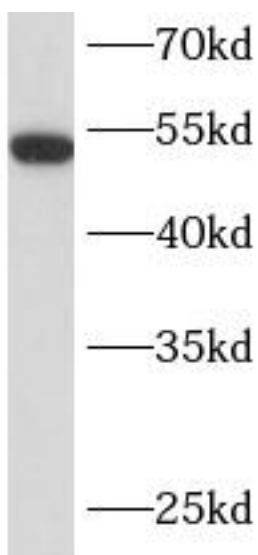
Immunogen:	lectin, mannose-binding, 1
Synonyms:	Protein ERGIC-53 ER-Golgi intermediate compartment 53 kDa protein Gp58 Intracellular mannose-specific lectin MR60 Lectin mannose-binding 1 LMAN1 ERGIC53 F5F8D
Observed MW:	54 kDa
Uniprot ID :	P49257

### Application

Reactivity:	Human, Mouse, Rat
Tested Application:	ELISA, WB, IHC
Recommended dilution:	WB: 1:500-1:2000; IHC: 1:20-1:200
Image:	



Immunohistochemistry of paraffin-embedded human stomach cancer using FNab04803(LMAN1 antibody) at dilution of 1:100



human brain tissue were subjected to SDS PAGE followed by western blot with FNab04803(LMAN1 antibody) at dilution of 1:400