

Lin28A-specific antibody

Product Information

Catalog No.:	FNab04784
Size:	100µg
Form:	liquid
Purification:	Immunogen affinity purified
Purity:	≥95% as determined by SDS-PAGE
Host:	Rabbit
Clonality:	polyclonal
Clone ID:	None
IsoType:	IgG
Storage:	PBS with 0.02% sodium azide and 50% glycerol pH 7.3, -20°C for 12 months(Avoid repeated freeze / thaw cycles.)

Background

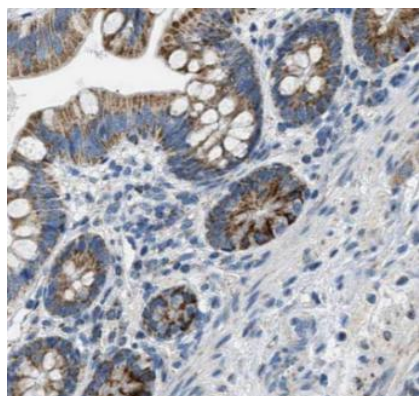
None

Immunogen information

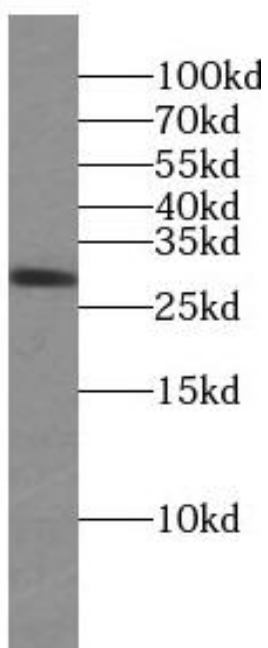
Immunogen:	lin-28 homolog
Synonyms:	Protein lin-28 homolog A (Lin-28A) Zinc finger CCHC domain-containing protein 1 LIN28A CSDD1 LIN28 ZCCHC1
Observed MW:	28 kDa
Uniprot ID :	Q9H9Z2

Application

Reactivity:	Human, Mouse, Rat
Tested Application:	ELISA, WB, IHC
Recommended dilution:	WB: 1:200-1:1000; IHC: 1:20-1:200
Image:	



Immunohistochemistry of paraffin-embedded human small intestine using FNab04784(Lin28A-specific antibody) at dilution of 1:50



human heart tissue were subjected to SDS PAGE followed by western blot with FNab04784(Lin28A-specific antibody) at dilution of 1:300