

LIN28A antibody

Product Information

Catalog No.:	FNab04783
Size:	100µg
Form:	liquid
Purification:	Immunogen affinity purified
Purity:	≥95% as determined by SDS-PAGE
Host:	Rabbit
Clonality:	polyclonal
Clone ID:	None
IsoType:	IgG
Storage:	PBS with 0.02% sodium azide and 50% glycerol pH 7.3, -20°C for 12 months(Avoid repeated freeze / thaw cycles.)

Background

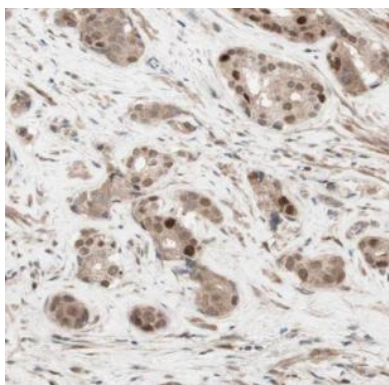
None

Immunogen information

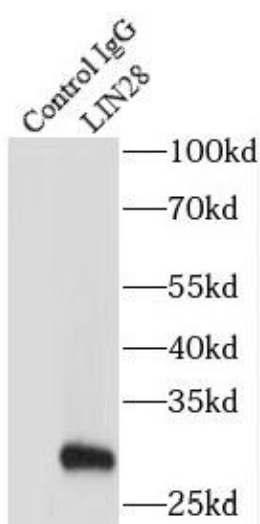
Immunogen:	lin-28 homolog
Synonyms:	Protein lin-28 homolog A (Lin-28A) Zinc finger CCHC domain-containing protein 1 LIN28A CSDD1 LIN28 ZCCHC1
Observed MW:	28 kDa
Uniprot ID :	Q9H9Z2

Application

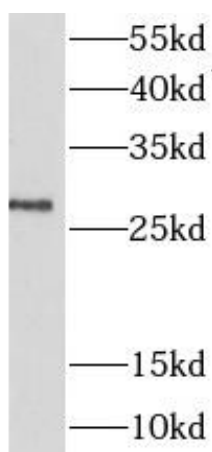
Reactivity:	Human, Mouse, Rat
Tested Application:	ELISA, WB, IHC, IP, IF
Recommended dilution:	WB: 1:500-1:2000; IP: 1:200-1:2000; IHC: 1:20-1:200; IF: 1:20-1:200
Image:	



Immunohistochemistry of paraffin-embedded human prostate cancer using FNab04783(LIN28 antibody) at dilution of 1:50



IP Result of anti-LIN28 (IP:FNab04783, 3ug; Detection:FNab04783 1:500) with K-562 cells lysate 1000ug.



K-562 cells were subjected to SDS PAGE followed by western blot with FNab04783(LIN28 antibody) at dilution of 1:300