

## LGR6 antibody

### Product Information

Catalog No.:	FNab04766
Size:	100µg
Form:	liquid
Purification:	Immunogen affinity purified
Purity:	≥95% as determined by SDS-PAGE
Host:	Rabbit
Clonality:	polyclonal
Clone ID:	None
IsoType:	IgG
Storage:	PBS with 0.02% sodium azide and 50% glycerol pH 7.3, -20°C for 12 months(Avoid repeated freeze / thaw cycles.)

### Background

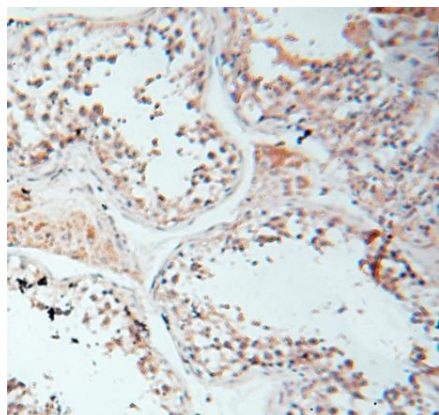
Receptor for R-spondins that potentiates the canonical Wnt signaling pathway and acts as a marker of multipotent stem cells in the epidermis. Upon binding to R-spondins(RSPO1, RSPO2, RSPO3 or RSPO4), associates with phosphorylated LRP6 and frizzled receptors that are activated by extracellular Wnt receptors, triggering the canonical Wnt signaling pathway to increase expression of target genes. In contrast to classical G-protein coupled receptors, does not activate heterotrimeric G-proteins to transduce the signal. May act as a tumor suppressor.

### Immunogen information

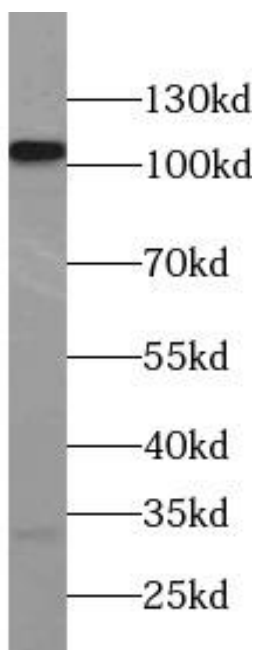
Immunogen:	leucine-rich repeat-containing G protein-coupled receptor 6
Synonyms:	Leucine-rich repeat-containing G-protein coupled receptor 6 LGR6
Observed MW:	104 kDa
Uniprot ID :	Q9HBX8

### Application

Reactivity:	Human, Mouse, Rat
Tested Application:	ELISA, IHC, WB, FC
Recommended dilution:	WB: 1:200-1:1000; IHC: 1:20-1:200
Image:	



Immunohistochemistry of paraffin-embedded human testis using FNab04766(LGR6 antibody) at dilution of 1:50



mouse testis tissue were subjected to SDS PAGE followed by western blot with FNab04766(LGR6 antibody) at dilution of 1:100