

## LDHB antibody

### Product Information

Catalog No.:	FNab04738
Size:	100µg
Form:	liquid
Purification:	Immunogen affinity purified
Purity:	≥95% as determined by SDS-PAGE
Host:	Rabbit
Clonality:	polyclonal
Clone ID:	None
IsoType:	IgG
Storage:	PBS with 0.02% sodium azide and 50% glycerol pH 7.3, -20°C for 12 months (Avoid repeated freeze / thaw cycles.)

### Background

This gene encodes the B subunit of lactate dehydrogenase enzyme, which catalyzes the interconversion of pyruvate and lactate with concomitant interconversion of NADH and NAD<sup>+</sup> in a post-glycolysis process. Alternatively spliced transcript variants have been found for this gene. Recent studies have shown that a C-terminally extended isoform is produced by use of an alternative in-frame translation termination codon via a stop codon readthrough mechanism, and that this isoform is localized in the peroxisomes. Mutations in this gene are associated with lactate dehydrogenase B deficiency. Pseudogenes have been identified on chromosomes X, 5 and 13.

### Immunogen information

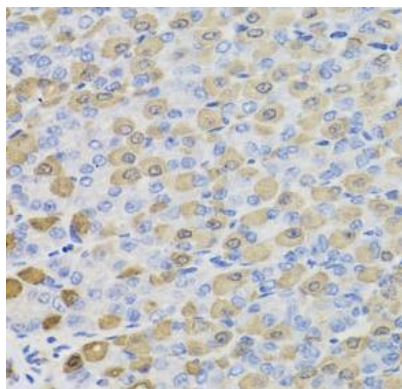
Immunogen:	lactate dehydrogenase B
Synonyms:	L-lactate dehydrogenase B chain (LDH-B) LDH heart subunit (LDH-H) Renal carcinoma antigen NY-REN-46 LDHB
Observed MW:	36 kDa
Uniprot ID :	P07195

### Application

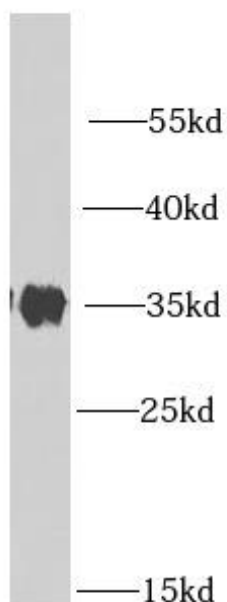
Reactivity:	Human, Mouse, Rat
Tested Application:	ELISA, WB, IHC

Recommended dilution: WB: 1:500 - 1:2000; IHC: 1:50 - 1:200

Image:



Immunohistochemistry of paraffin-embedded mouse stomach using FNab04738(LDHB Antibody) at dilution of 1:200 heat mediated antigen retrieved with Tris-EDTA buffer(pH9).



mouse brain tissue were subjected to SDS PAGE followed by western blot with FNab04738(LDHB antibody) at dilution of 1:1000