

LDHA antibody

Product Information

Catalog No.:	FNab04735
Size:	100µg
Form:	liquid
Purification:	Immunogen affinity purified
Purity:	≥95% as determined by SDS-PAGE
Host:	Rabbit
Clonality:	polyclonal
Clone ID:	None
IsoType:	IgG
Storage:	PBS with 0.02% sodium azide and 50% glycerol pH 7.3, -20°C for 12 months(Avoid repeated freeze / thaw cycles.)

Background

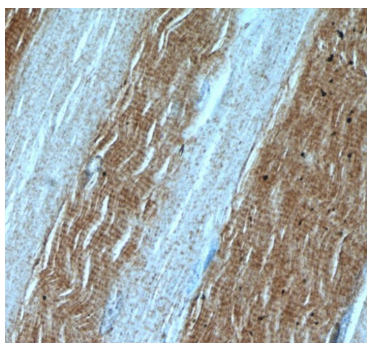
None

Immunogen information

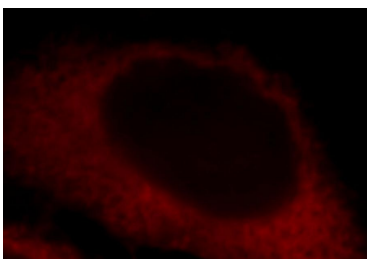
Immunogen:	lactate dehydrogenase A
Synonyms:	L-lactate dehydrogenase A chain (LDH-A) Cell proliferation-inducing gene 19 protein LDH muscle subunit (LDH-M) Renal carcinoma antigen NY-REN-59 LDHA
Observed MW:	32-36 kDa
Uniprot ID :	P00338

Application

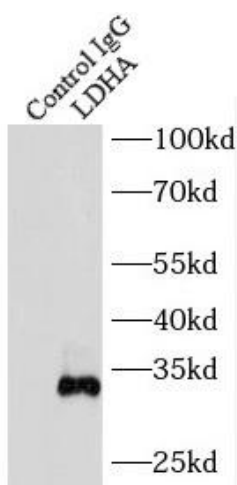
Reactivity:	Human, Mouse, Rat
Tested Application:	ELISA, WB, IHC, IF, IP
Recommended dilution:	WB: 1:500-1:5000; IP: 1:200-1:2000; IHC: 1:20-1:200; IF: 1:10-1:100
Image:	



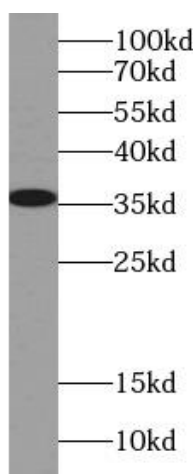
Immunohistochemistry of paraffin-embedded human skeletal muscle using FNab04735(LDHA antibody) at dilution of 1:50



Immunofluorescent analysis of HepG2 cells, using LDHA antibody FNab04735 at 1:25 dilution and Rhodamine-labeled goat anti-rabbit IgG (red).



IP Result of anti-LDHA (IP:FNab04735, 4ug; Detection:FNab04735 1:500) with HEK-293 cells lysate 2000ug.



HeLa cells were subjected to SDS PAGE followed by western blot with FNab04735(LDHA antibody) at dilution of 1:500