

KRT6B antibody

Product Information

Catalog No.:	FNab04656
Size:	100µg
Form:	liquid
Purification:	Immunogen affinity purified
Purity:	≥95% as determined by SDS-PAGE
Host:	Rabbit
Clonality:	polyclonal
Clone ID:	None
IsoType:	IgG
Storage:	PBS with 0.02% sodium azide and 50% glycerol pH 7.3, -20°C for 12 months(Avoid repeated freeze / thaw cycles.)

Background

The protein encoded by this gene is a member of the keratin gene family. The type II cytokeratins consist of basic or neutral proteins which are arranged in pairs of heterotypic keratin chains coexpressed during differentiation of simple and stratified epithelial tissues. As many as six of this type II cytokeratin (KRT6) have been identified; the multiplicity of the genes is attributed to successive gene duplication events. The genes are expressed with family members KRT16 and/or KRT17 in the filiform papillae of the tongue, the stratified epithelial lining of oral mucosa and esophagus, the outer root sheath of hair follicles, and the glandular epithelia. Mutations in these genes have been associated with pachyonychia congenita.

Immunogen information

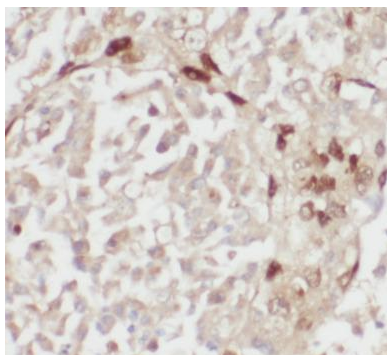
Immunogen:	keratin 6B
Synonyms:	Keratin, type II cytoskeletal 6B Cytokeratin-6B (CK-6B) Keratin-6B (K6B) Type-II keratin Kb10 KRT6B K6B KRTL1
Observed MW:	60 kDa
Uniprot ID :	P04259

Application

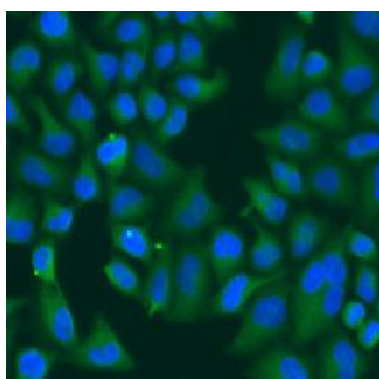
Reactivity:	Human, Mouse
Tested Application:	ELISA, WB, IHC, IF

Recommended dilution: WB: 1:1000-1:5000; IHC: 1:50-1:500; IF: 1:200-1:1000

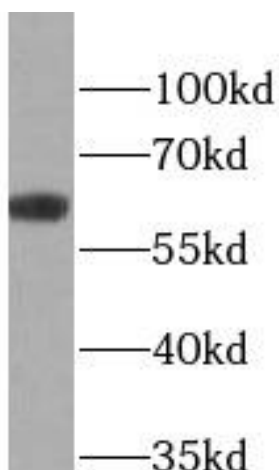
Image:



Immunohistochemistry of paraffin-embedded human lung cancer tissue slide using FNab04656(KRT6B Antibody) at dilution of 1:100



Immunofluorescent analysis of U2OS cells using FNab04656 (Cytokeratin 6B antibody) at dilution of 1:50 and Alexa Fluor 488-conjugated Goat Anti-Rabbit IgG(H+L)



mouse skin tissue were subjected to SDS PAGE followed by western blot with FNab04656(KRT6B antibody) at dilution of 1:1000