

KRR1 antibody

Product Information

Catalog No.:	FNab04647
Size:	100µg
Form:	liquid
Purification:	Immunogen affinity purified
Purity:	≥95% as determined by SDS-PAGE
Host:	Rabbit
Clonality:	polyclonal
Clone ID:	None
IsoType:	IgG
Storage:	PBS with 0.02% sodium azide and 50% glycerol pH 7.3, -20°C for 12 months(Avoid repeated freeze / thaw cycles.)

Background

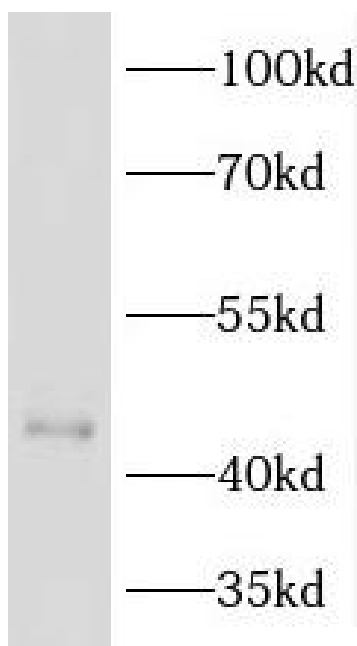
Required for 40S ribosome biogenesis. Involved in nucleolar processing of pre-18S ribosomal RNA and ribosome assembly(By similarity).

Immunogen information

Immunogen:	KRR1, small subunit(SSU) processome component, homolog(yeast)
Synonyms:	KRR1 small subunit processome component homolog HIV-1 Rev-binding protein 2 KRR-R motif-containing protein 1 Rev-interacting protein 1 (Rip-1) KRR1 HRB2
Observed MW:	44 kDa
Uniprot ID :	Q13601

Application

Reactivity:	Human, Mouse, Rat
Tested Application:	ELISA, WB
Recommended dilution:WB:	1:500-1:2000
Image:	



human brain tissue were subjected to SDS PAGE followed by western blot with FNab04647(KRR1 antibody) at dilution of 1:500