

KRAS antibody

Product Information

| | |
|---------------|--|
| Catalog No.: | FNab04641 |
| Size: | 100µg |
| Form: | liquid |
| Purification: | Immunogen affinity purified |
| Purity: | ≥95% as determined by SDS-PAGE |
| Host: | Rabbit |
| Clonality: | polyclonal |
| Clone ID: | None |
| IsoType: | IgG |
| Storage: | PBS with 0.02% sodium azide and 50% glycerol pH 7.3, -20°C for 12 months(Avoid repeated freeze / thaw cycles.) |

Background

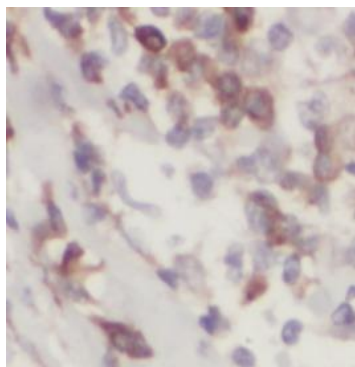
Ras proteins bind GDP/GTP and possess intrinsic GTPase activity. Plays an important role in the regulation of cell proliferation(PubMed:23698361, PubMed:22711838). Plays a role in promoting oncogenic events by inducing transcriptional silencing of tumor suppressor genes(TSGs) in colorectal cancer(CRC) cells in a ZNF304-dependent manner(PubMed:24623306).

Immunogen information

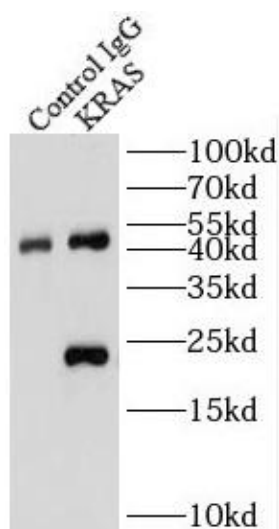
| | |
|--------------|--|
| Immunogen: | v-Ki-ras2 Kirsten rat sarcoma viral oncogene homolog |
| Synonyms: | GTPase KRas K-Ras 2 Ki-Ras c-K-ras c-Ki-ras GTPase KRas, N-terminally processed KRAS KRAS2 RASK2 |
| Observed MW: | 21 kDa |
| Uniprot ID : | P01116 |

Application

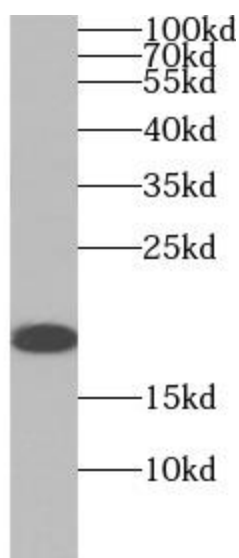
| | |
|-----------------------|---|
| Reactivity: | Human, Mouse, Rat |
| Tested Application: | ELISA, WB, IP, IHC |
| Recommended dilution: | WB: 1:500 - 1:1000; IHC: 1:50 - 1:200; IP: 1:50 - 1:200 |
| Image: | |



Immunohistochemistry of paraffin-embedded human lung cancer tissue slide using FNab04641(KRAS Antibody) at dilution of 1:100



IP result of anti-KRAS(IP:FNab04641, 4ug; Detection:FNab04641 1:1000) with HeLa cells lysate 2680 ug



mouse brain tissue were subjected to SDS PAGE followed by western blot with FNab04641(KRAS antibody) at dilution of 1:1000