

KLRF1 antibody

Product Information

Catalog No.:	FNab04632
Size:	100µg
Form:	liquid
Purification:	Immunogen affinity purified
Purity:	≥95% as determined by SDS-PAGE
Host:	Rabbit
Clonality:	polyclonal
Clone ID:	None
IsoType:	IgG
Storage:	PBS with 0.02% sodium azide and 50% glycerol pH 7.3, -20°C for 12 months(Avoid repeated freeze / thaw cycles.)

Background

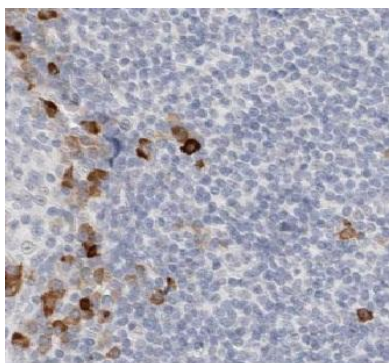
Involved in the natural killer(NK)-mediated cytolysis of PHA-induced lymphoblasts.

Immunogen information

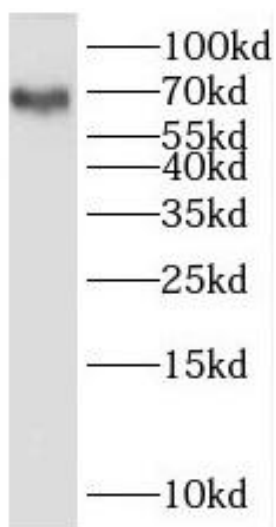
Immunogen:	killer cell lectin-like receptor subfamily F, member 1
Synonyms:	Killer cell lectin-like receptor subfamily F member 1 (Lectin-like receptor F1) Activating coreceptor NKp80 C-type lectin domain family 5 member C KLRF1 CLEC5C ML
Observed MW:	68 kDa
Uniprot ID :	Q9NZS2

Application

Reactivity:	Human
Tested Application:	ELISA, WB, IHC
Recommended dilution:	WB: 1:500-1:2000; IHC: 1:20-1:200
Image:	



Immunohistochemistry of paraffin-embedded human tonsillitis tissue slide using FNab04632(KLRF1 Antibody) at dilution of 1:50



human spleen tissue were subjected to SDS PAGE followed by western blot with FNab04632(KLRF1 antibody) at dilution of 1:500