

## KLK3 antibody

### Product Information

Catalog No.:	FNab04630
Size:	100µg
Form:	liquid
Purification:	Protein A+G purification
Purity:	≥95% as determined by SDS-PAGE
Host:	Mouse
Clonality:	monoclonal
Clone ID:	1G1
IsoType:	IgG2a
Storage:	PBS with 0.02% sodium azide and 50% glycerol pH 7.3, -20°C for 12 months(Avoid repeated freeze / thaw cycles.)

### Background

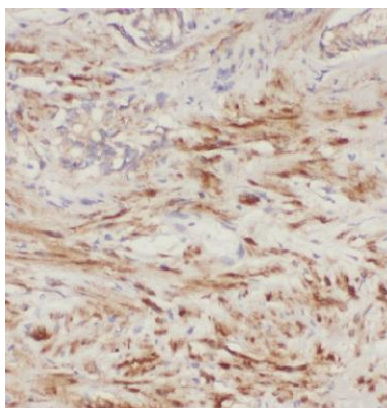
None

### Immunogen information

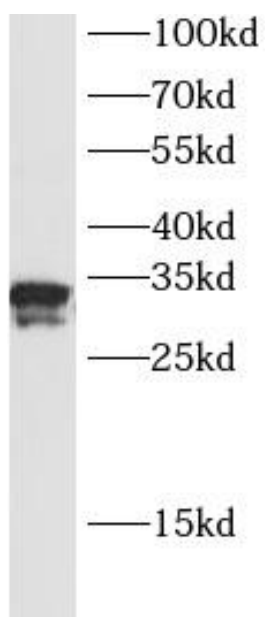
Immunogen:	kallikrein-related peptidase 3
Synonyms:	Prostate-specific antigen (PSA) Gamma-seminoprotein (Seminin) Kallikrein-3 P-30 antigen Semenogelase KLK3 APS
Observed MW:	30-34 kDa
Uniprot ID :	P07288

### Application

Reactivity:	Human
Tested Application:	ELISA, IHC, WB
Recommended dilution:	WB : 1:200-1:2000; IHC: 1:1000-1:5000
Image:	



Immunohistochemistry of paraffin-embedded human prostate cancer using FNab04630( KLK3,PSA antibody) at dilution of 1:200



LNCaP cells were subjected to SDS PAGE followed by western blot with FNab04630( PSA Antibody) at dilution of 1:1000